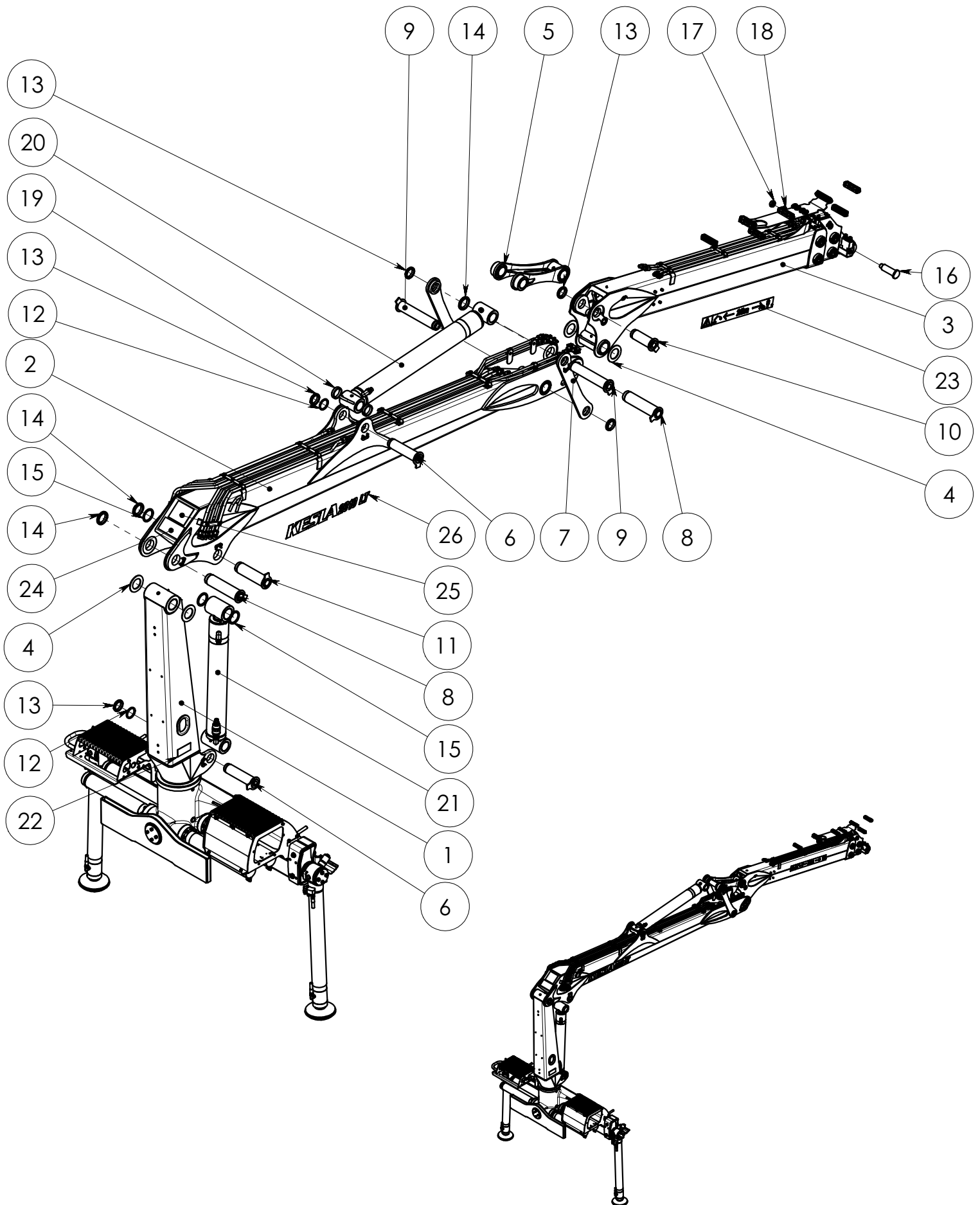


KESLA 2010L, 2010LT**Sisällysluettelo\Innehållsförteckning\Contents \Inhaltsverzeichnis**

| | |
|--|-----|
| Pääkokooppaano \ Sammansättning \ Final assembly \ Zusammensetzung | 1 |
| Käantölaite \ Vridanordning \ Slew mechanism \ Schwenkwerk | 3 |
| Tukijalkavarustus \ Stödbensutrustning \ Stabilizers \ Stützfußbausrüstung | 6 |
| Nostopuomi \ Lyftbom \ Main lifting boom \ Hubarm | 9 |
| Nostopuomi hyttivarustus \ Lyftbom hytt utrustning \ Main lifting boom cabin assy\ Hubarm kabine Besatzung | 11 |
| Siirtopuomisto \ Vipparm \ Outer boom \ Knickarm KESLA 2010L | 13 |
| Siirtopuomisto \ Vipparm \ Outer boom \ Knickarm KESLA 2010LT..... | 16 |
| Siirtopuomiston ketju \ Kedja \ Chain \ Kette kompl. \.R1" (81) | 19 |
| Vetotanko varusteltuna \ Dragstång \ Inner link assy \ Mittleres Gelenk | 21 |
| Nostosylinteri varusteltuna \ Lyftcylinder utrustning \ Accessories for main lifting cylinder \ Ausrüstung für Hubzylinder | 23 |
| Nostosylinteri \ Lyftcylinder \ Main lifting cylinder \ Hubzylinder..... | 25 |
| Siirtosylinteri varusteltuna \ Vippcylinder utrustning \ Accessories for outer boom cylinder \ Ausrüstung für Knickarmzylinder..... | 27 |
| Siirtosylinteri \ Vippcylinder \ Outer boom cylinder \ Knickarmzylinder | 29 |
| Tukijalkojen levityssylinteri \ Spridningscylinder \ Spreading cylinder \ Ausshubzylinder für Stützfüsse | 31 |
| Jatkeen sylinteri \Utskjutscylinder \ Extension cylinder \ Ausschubzylinder \ KESLA 2010L..... | 33 |
| Jatkeen sylinteri \Utskjutscylinder \ Extension cylinder \ Ausschubzylinder \ KESLA 2010LT | 35 |
| Tukijalan sylinteri \ Stödbenscylinder \ Stabilizer cylinder \ Stützfußcylinder | 37 |
| Riipuke varusteltuna \ Rotatorlänk \ Rotator link \ Rotatorgelenk..... | 39 |
| Painesuodatin \ Tryckfilter \ Pressure filter \ Druckfilter | 41 |
| Nostosylinterin suoja \ fastening bolts \ fästbults \ Aufspannbolzen..... | 43 |
| Kiinnityspultit \ fastening bolts \ fästbults \ Aufspannbolzen \..... | 45 |
| Hallintalaitteet \ Styrningsanordning \ Control unit \ Bedienungsanordning | 47→ |

90000324

NOSTURI





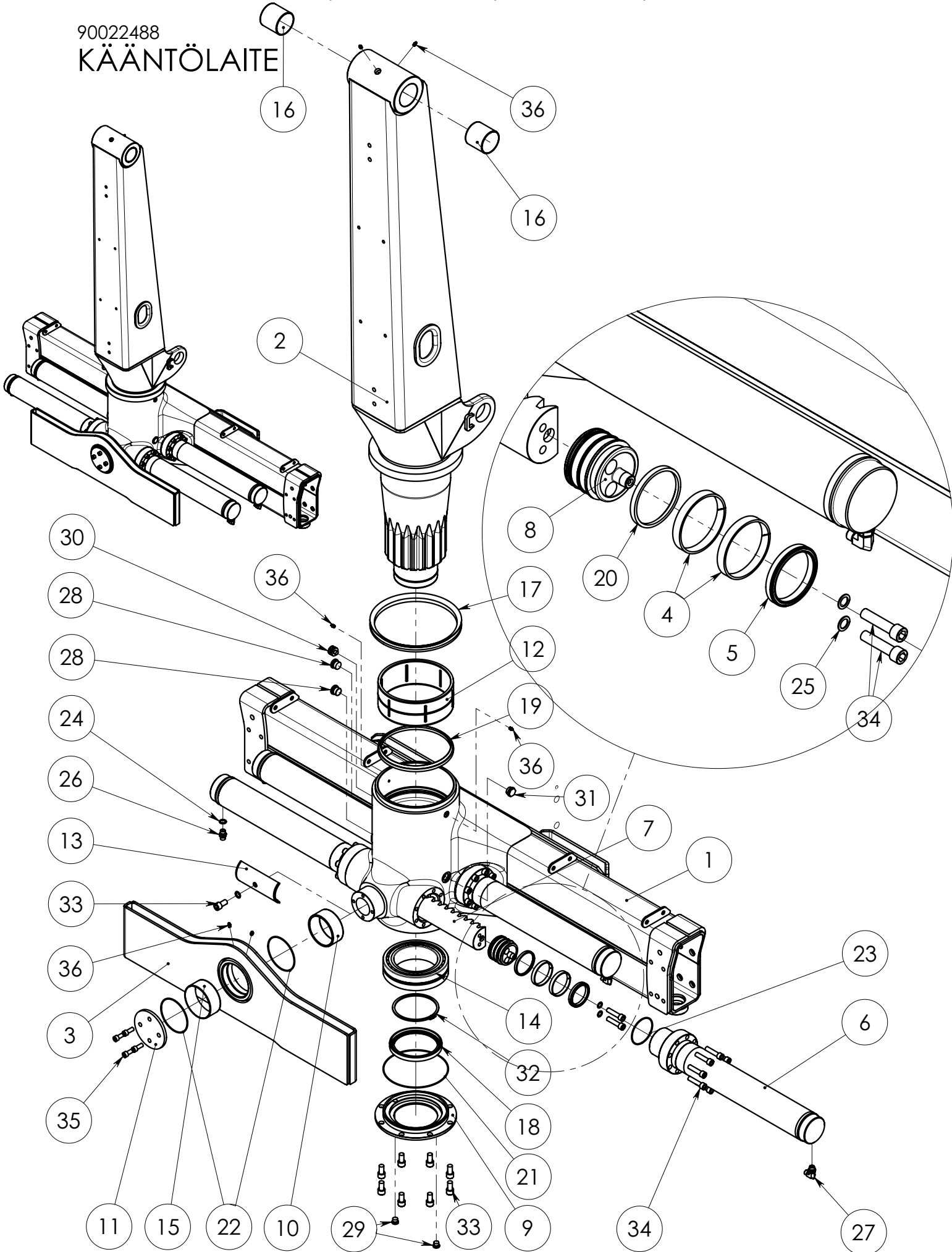
SPARE PART LIST

| | | | |
|---------------|--------------|----------|------------|
| Item code | 90000324 | Revision | - |
| Title | NOSTURI | Date | 16.07.2008 |
| Specification | KESLA 2010LT | | |

| Pos | Item code | Title | Specification | Dimensions | Pc | Amount | Unit | Nto Weight |
|-----|-----------|--|------------------------------------|------------|----|--------|------|------------|
| 1 | 90022495 | JALKA FOT FOOT FUSS | TUKIJALKAVAR | | 1 | | | 899.75 |
| 2 | 90022560 | NOSTOPUOMI LYFTBOM LIFT BOOM HUBARM | VAR | | 1 | | | 338.96 |
| 3 | 90022663 | PUOMI BOM BOOM ARM | SIIRTOPUOMI 2-JATK | | 1 | | | 329.31 |
| 4 | 90010011 | LAAKERI LAGER BEARING LAGER | 130/80.5 - 5 | 142x142 | 4 | | | 0.05 |
| 5 | 90016039 | TANKO LÄNK LINK GELENK | | | 1 | | | 22.39 |
| 6 | 90015998 | AKSELI AXEL AXLE ACHSE | 70/M65X2-298 | | 2 | | | 6.76 |
| 7 | 90016040 | TANKO LÄNK LINK GELENK | HITS+KON | | 2 | | | 9.03 |
| 8 | 90015226 | AKSELI AXEL AXLE ACHSE | 80/M75-338 | | 2 | | | 9.09 |
| 9 | 90016003 | AKSELI AXEL AXLE ACHSE | 70/M65X2-388 | | 2 | | | 8.75 |
| 10 | 90016005 | AKSELI AXEL AXLE ACHSE | 70/M65X2-216 | | 1 | | | 4.93 |
| 11 | 90020764 | AKSELI AXEL AXLE ACHSE | 80-300 | | 1 | | | 8.07 |
| 12 | 90016000 | ALUSLEVY BRICKA WASHER UNTERLEGSCHEIBE | 85/71-6 | L=150 | 2 | | | 0.08 |
| 13 | 3020157 | MUTTERI MUTTER NUT MUTTER | KM 13 NYLOC M65X2.0 | | 5 | | | 0.26 |
| 14 | 3020158 | MUTTERI MUTTER NUT MUTTER | KM 15 NYLOC M75X2 | | 3 | | | 0.35 |
| 15 | 90013697 | ALUSLEVY BRICKA WASHER UNTERLEGSCHEIBE | 100/81-6 | L=150 | 3 | | | 0.13 |
| 16 | 90013105 | AKSELI AXEL AXLE ACHSE | 45-164 | L=167 | 1 | | | 1.94 |
| 17 | 3020144 | MUTTERI MUTTER NUT MUTTER | KM6 M30X1.5 ZN NYLOC | | 1 | | | |
| 18 | 90013106 | ALUSLEVY BRICKA WASHER UNTERLEGSCHEIBE | 56/31-8 | L=150 | 1 | | | 0.08 |
| 19 | 90016045 | HOLKKI HYLSA SLEEVE ACHSHALTER | 85/71-18 | L=20 | 2 | | | 0.24 |
| 20 | 90017040 | SYLINTERI CYLINDER CYLINDER ZYLINDER | 125X70X 1020 VARUSTELU | | 1 | | | 28.76 |
| 21 | 90022565 | SYLINTERI CYLINDER CYLINDER ZYLINDER | 120/70 X 800 NOSTOSYLINTERI 2010 L | | 1 | | | 65.9 |
| 22 | 3280201 | KILPI SKYLT PLATE SCHILD | TYPE PLATE CE | | 1 | | | |
| 23 | 3281135 | TARRA DEKAL DECAL AUFKLEBER | VAARA-ALUE 25M | | 2 | | | 0.1 |
| 24 | 3281440 | KILPI SKYLT PLATE SCHILD | NOSTOARVOTAULUKKO 2010L | | 1 | | | 0.16 |
| 25 | 3280264 | TARRA DEKAL DECAL AUFKLEBER | VARO JÄNNITTEISTÄ. | | 1 | | | |
| 26 | 3281455 | TARRA DEKAL DECAL AUFKLEBER | KESLA 2010 LT TUOTETARRA | | 2 | | | 0.07 |
| 27 | 3280231 | TARRA DEKAL DECAL AUFKLEBER | OHJAUSKAAVIO 2-VIPU | | 1 | | | |
| 28 | 90022521 | RUIVI SKRUV SCREW SCHRAUBE | SARJA M30X2-750 | | 1 | | | 24.8 |

90022488

KÄÄNTÖLAITE





OSALUETTELO

| | | | |
|---------------|-------------|---------|------------|
| Nimikenumero | 90022488 | Revisio | - |
| Nimitys | KÄÄNTÖLAITE | Päiväys | 04.04.2008 |
| Specifikaatio | | Liitty | |

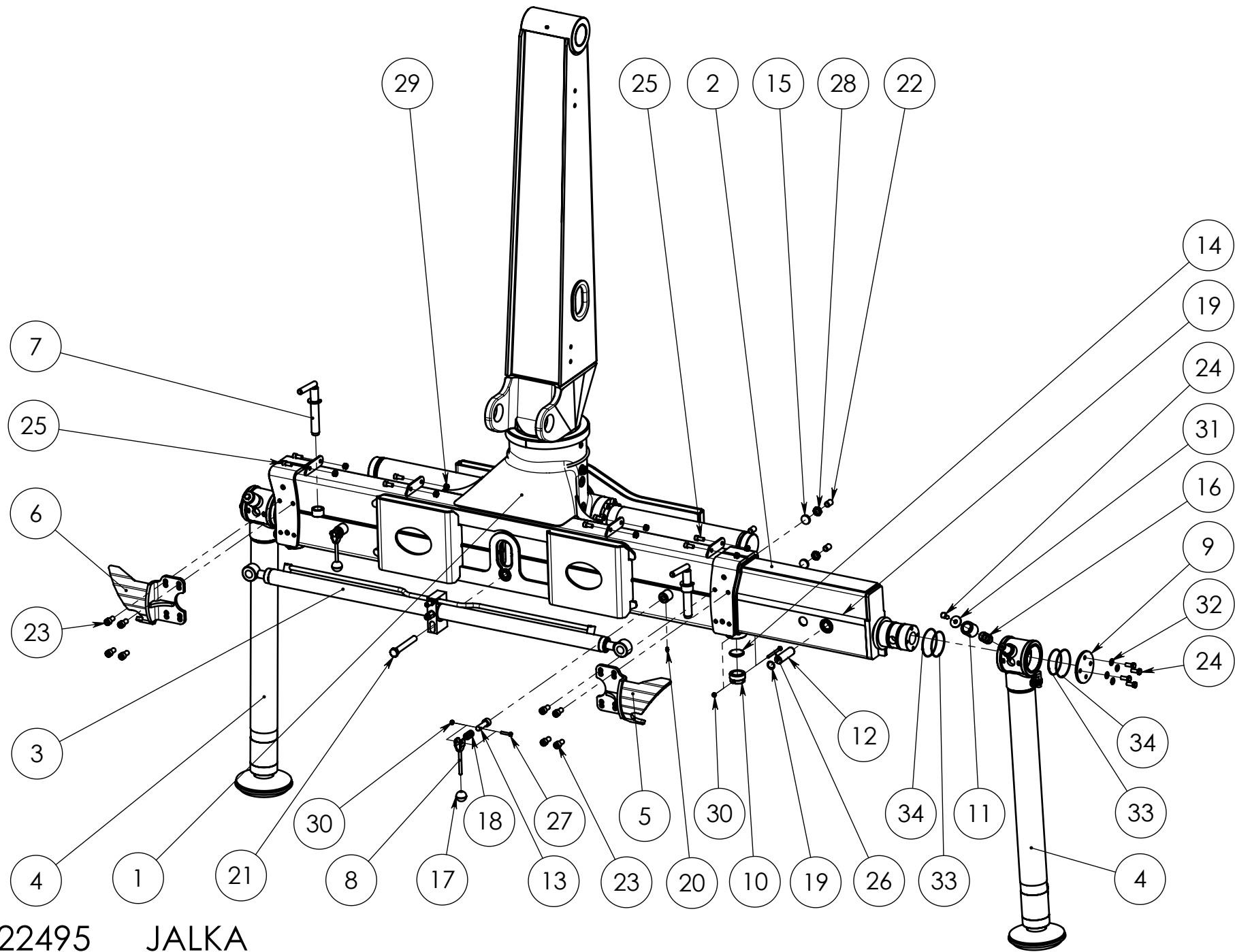
| Pos | Nimike n:o | Nimitys + Specifikaatio | Mitat | Kpl | Määrä | Yks | Nto paino | Huom |
|-----|------------|---------------------------------------|---------|-----|-------|-----|-----------|------|
| 1 | 90022481 | RUNKO HITS (U-TUKIJALKAPALKKI) | | 1 | | | 272.64 | |
| 2 | 90021856 | PYLVÄS KONEISTUS | | 1 | | | 263.72 | |
| 3 | 90021823 | PALKKI HITS+KON | | 1 | | | 34.47 | |
| 4 | 3110637 | TIIVISTE E/PWR 90/84X13 | | 8 | | | 0.08 | |
| 5 | 3110636 | TIIVISTE B7 90/75X12 (F908 | | 4 | | | 0.16 | |
| 6 | 90021819 | SYLINTERI | | 4 | | | 17.00 | |
| 7 | 90021811 | HAMMASTANKO | L=850 | 2 | | | 22.25 | |
| 8 | 90021815 | MÄNTÄ | L=95 | 4 | | | 2.35 | |
| 9 | 90021820 | LAIPPA | 286x286 | 1 | | | 4.09 | |
| 10 | 90020846 | HOLKKI 120/110-50 | L=53 | 1 | | | 0.70 | |
| 11 | 90020845 | LAIPPA 145X90-10 | 145X145 | 1 | | | 1.25 | |
| 12 | 90012821 | HOLKKI 260/240-100 | L=102 | 1 | | | 0.88 | |
| 13 | 90016013 | LAAKERI 97.6/85-189 | L=191 | 2 | | | 0.13 | |
| 14 | 3100331 | LAAKERI 23030CC/W33 | | 1 | | | | |
| 15 | 3100218 | LAAKERI WB 802 12050 | | 1 | | | 0.38 | |
| 16 | 3100187 | LAAKERI WB 802 8080 | | 2 | | | 0.41 | |
| 17 | 3110930 | TIIVISTE VA-300 | | 1 | | | 1.63 | |
| 18 | 3110565 | TIIVISTE RST 150X180X15 | | 1 | | | 0.50 | |
| 19 | 3110909 | PYYHKIJÄ A1 240X18 | | 1 | | | | |
| 20 | 3110638 | TIIVISTE PPW 90/81.4X5.3 | | 4 | | | 0.05 | |
| 21 | 3110771 | TIIVISTE O 219.5X3.0 70 SH | | 1 | | | 0.04 | |
| 22 | 3110461 | TIIVISTE O 124.5 X 3.0 SHORE 70 | | 2 | | | 0.02 | |
| 23 | 3110639 | TIIVISTE O 96X3.0 70 SHORE (F908/910) | | 4 | | | 0.02 | |
| 24 | 3110040 | TIIVISTE USIT R-06 (R 3/8") | | 4 | | | 0.00 | |
| 25 | 3030080 | TIIVISTE CU M14 | | 8 | | | | |
| 26 | 3090040 | LIITIN 04000-06 | | 2 | | | 0.06 | |
| 27 | 3090475 | LIITIN 04500-26-06 | | 2 | | | 0.12 | |
| 28 | 3090209 | TULPPA HF-3/4" | | 2 | | | 0.08 | |
| 29 | 3090210 | TULPPA HF-3/8" | | 2 | | | 0.03 | |
| 30 | 3091042 | HUOHOTIN R1/4" SFV. 1/4-100 MB | | 1 | | | 0.11 | |
| 31 | 3090294 | OSOITIN R 3/4" HFTX-20 | | 1 | | | 0.01 | |
| 32 | 3060076 | PIDÄTINRENGAS A 150X4, DIN 471 | | 1 | | | 0.00 | |
| 33 | 3010700 | RUUVI KKR M16 X 30 8.8 ZN DIN 912 | | 10 | | | 0.00 | |
| 34 | 3010601 | RUUVI KKR M14X60 12.9 DIN 912 | | 40 | | | 0.00 | |
| 35 | 3010246 | RUUVI KKR M12 X 30 8.8 ZN DIN 912 | | 4 | | | 0.00 | |
| 36 | 3050003 | RASVANIPPA M8X1,25 DIN 71412 | | 6 | | | 0.00 | |



SPARE PART LIST

| | | | |
|---------------|-------------|----------|------------|
| Item code | 90022488 | Revision | - |
| Title | KÄÄNTÖLAITE | Date | 04.04.2008 |
| Specification | 23 kNm | | |

| Pos | Item code | Title | Specification | Dimensions | Pc | Amount | Unit | Nto weight |
|-----|-----------|---------------------------------|---------------|------------|----|--------|------|------------|
| 37 | 3110640 | TIIVISTETÄÄNINING SEAL DICHTUNG | 90 | | 1 | | stj | |



90022495 JALKA

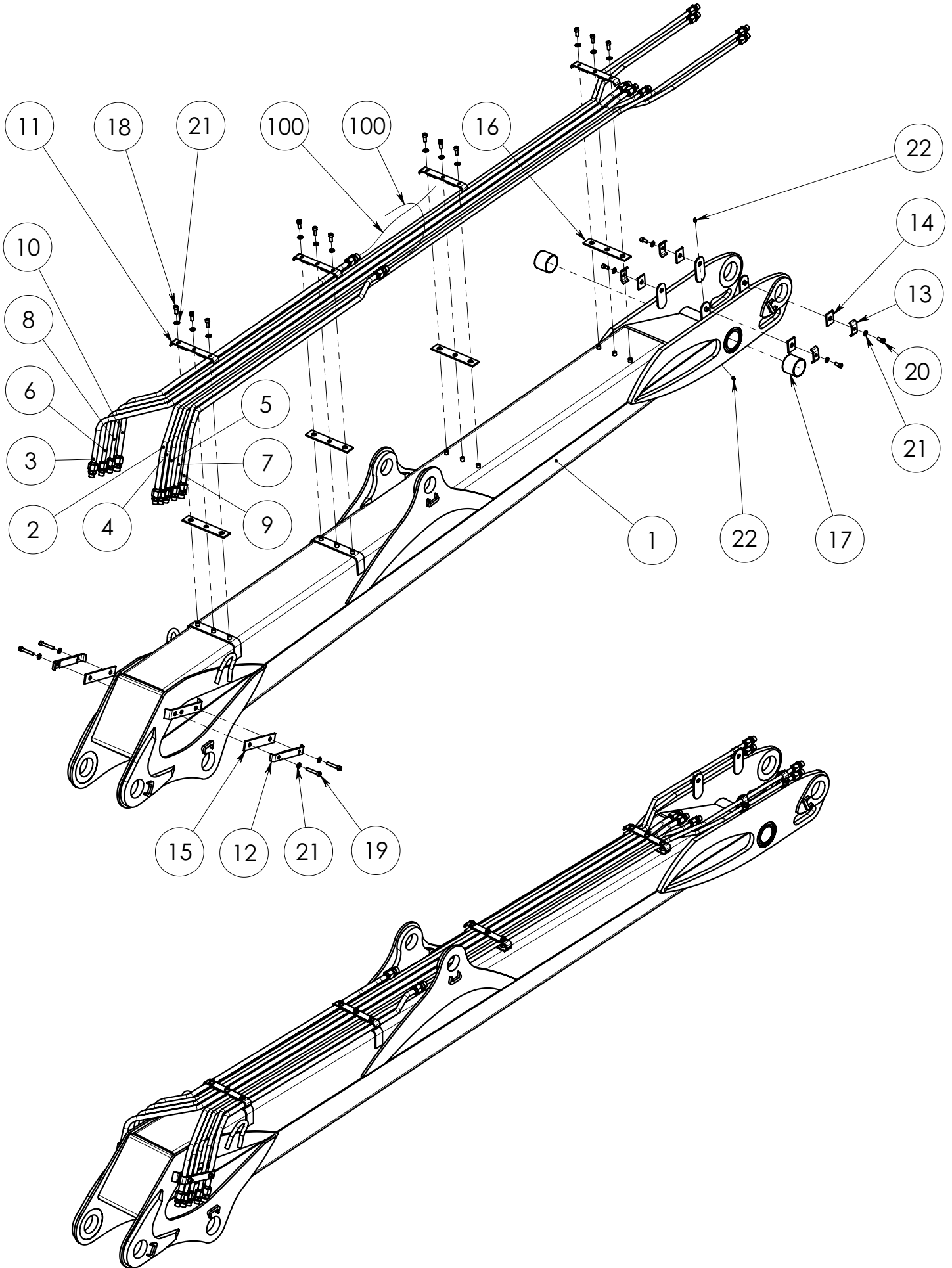
VARAOSAT \ RESERVDELAR \ SPARE PARTS \ ERSATZTEIL

| | | | |
|---------------|--------------|----------|------------|
| Item code | 90022495 | Revision | A |
| Title | FOOT | Date | 15.04.2008 |
| Specification | TUKIJALKAVAR | | |

| Pos | Item code | Title | Specification | Pc | Nto Weight |
|-----|-----------|-----------------|-----------------------------|----|------------|
| 1 | 90022488 | SLEW MECHANNISM | 23 kNm | 1 | 672.75 |
| 2 | 90022477 | ARM | HITS (U-TUKIJALKAPALKKI) | 2 | 46.66 |
| 3 | 28812001 | CYLINDER | 50/30X2X600 | 1 | 8.11 |
| 4 | 28554001 | CYLINDER | 90/70X750 | 2 | 24.56 |
| 5 | 90021843 | CABLE | OIKEA HITS | 1 | 4.9 |
| 6 | 90021844 | CABLE | VASEN HITS | 1 | 4.9 |
| 7 | 90011249 | AXLE | HITS | 2 | 1.43 |
| 8 | 90012844 | LEVER | 10-120 | 2 | 0.16 |
| 9 | 90011250 | FLANGE | | 2 | 0.73 |
| 10 | 90016090 | FASTENER | | 2 | 0.35 |
| 11 | 90012841 | SLEEVE | 50/34-50 | 2 | 0.41 |
| 12 | 90013050 | AXLE | 30-102 | 2 | 0.57 |
| 13 | 90012843 | SPINDLE | 28/18-76 | 2 | 0.2 |
| 14 | 90020689 | GLIDE PAD | 40X55-7X5 | 2 | 0.03 |
| 15 | 90020807 | GLIDE PAD | | 6 | 0.01 |
| 16 | 3100124 | BEARING | PM 3020 DX | 4 | 0.03 |
| 17 | 3120453 | KNOB | | 2 | 0.25 |
| 18 | 3300533 | SPRING | 18/45/7.6/6.88 -1643 SF-TF3 | 2 | 0.02 |
| 19 | 3060019 | SNAP RING | 30 DIN 472 | 4 | 0 |
| 20 | 3050003 | GREASE NIPPLE | M8X1,25 DIN 71412 | 2 | 0 |
| 21 | 3010049 | SCREW | M20X150 8.8 ZN DIN 931 | 1 | 0 |
| 22 | 3010312 | SCREW | M20X30 10.9 ZN DIN 913 | 6 | 0 |
| 23 | 3010700 | SCREW | M16X30 8.8 ZN DIN 912 | 8 | 0 |
| 24 | 3010048 | SCREW | M12X30 8.8 ZN DIN 933 | 10 | 0 |
| 25 | 3010239 | SCREW | M12X25 8.8 ZN DIN 912 | 8 | 0 |
| 26 | 3010328 | SCREW | M8X90 8.8 ZN DIN 931 | 2 | 0 |
| 27 | 3010441 | SCREW | M8X40 8.8 ZN DIN 931 | 2 | 0 |
| 28 | 3020014 | NUT | M20 ZN DIN 936 | 6 | 0 |
| 29 | 3020005 | NUT | M12 ZN DIN 985 | 8 | 0.02 |
| 30 | 3020001 | NUT | M8 ZN DIN 985 | 4 | 0.01 |
| 31 | 3030122 | WASHER | M12 ZN DIN 440 | 2 | 0.04 |
| 32 | 3030047 | WASHER | M12/13 ZN DIN 126 | 8 | 0.01 |
| 33 | 3110934 | SEAL | O 94,5X3 70 SHORE | 4 | 0.02 |
| 34 | 3110259 | SEAL | 104.5X3 90 SHORE | 4 | 0.02 |
| 35 | 3010685 | SCREW | M10X25 8.8 ZN DIN 912 | 1 | 0 |

90022560

NOSTOPUOMI





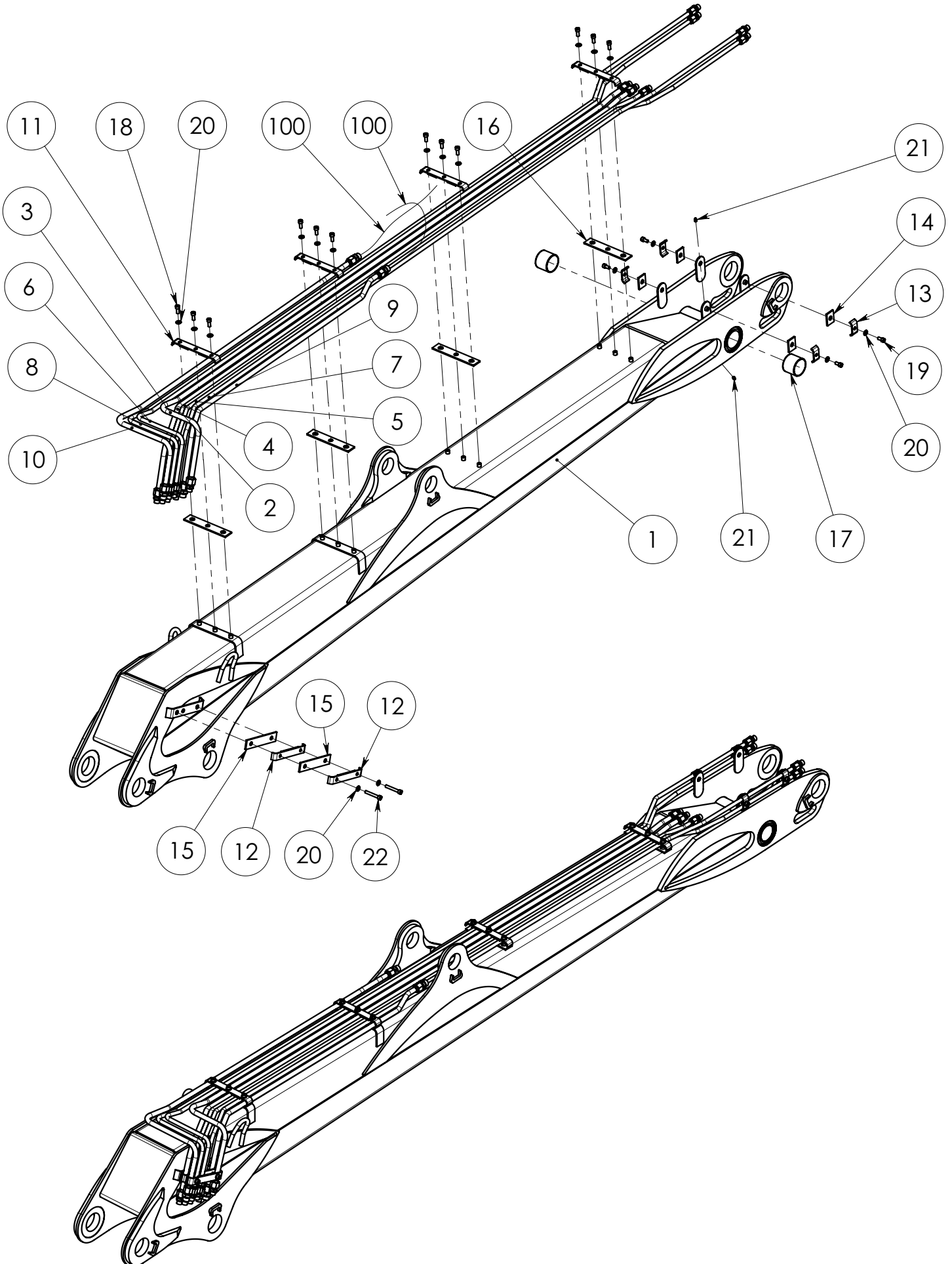
SPARE PART LIST

| | | | |
|---------------|------------|----------|------------|
| Item code | 90022560 | Revision | - |
| Title | NOSTOJUOMI | Date | 29.05.2008 |
| Specification | VAR 2010 L | | |

| Pos | Item code | Title | Specification | Dimensions | Pc | Amount | Unit | Nto Weight |
|-----|-----------|---|---------------------------------|------------|----|--------|------|------------|
| 1 | 90022559 | NOSTOJUOMI LYFTBOM LIFT BOOM HUBARM | KONESTUS 2010L | | 1 | | | 306.44 |
| 2 | 90021993 | PUTKI RÖR PIPE ROHR | 1 OIKEA KOK | | 1 | | | 4.42 |
| 3 | 90022003 | PUTKI RÖR PIPE ROHR | 1 VASEN KOK | | 1 | | | 4.42 |
| 4 | 90021996 | PUTKI RÖR PIPE ROHR | 2 OIKEA KOK | | 1 | | | 2.94 |
| 5 | 90021994 | PUTKI RÖR PIPE ROHR | 3 OIKEA KOK | | 1 | | | 3.3 |
| 6 | 90022004 | PUTKI RÖR PIPE ROHR | 3 VASEN KOK | | 1 | | | 3.3 |
| 7 | 90021997 | PUTKI RÖR PIPE ROHR | 4 OIKEA KOK | | 1 | | | 3.27 |
| 8 | 90022005 | PUTKI RÖR PIPE ROHR | 4 VASEN KOK | | 1 | | | 3.27 |
| 9 | 90021992 | PUTKI RÖR PIPE ROHR | 5 OIKEA KOK | | 1 | | | 2.57 |
| 10 | 90022006 | PUTKI RÖR PIPE ROHR | 5 VASEN KOK | | 1 | | | 2.57 |
| 11 | 90021956 | KIINNIKE FÄSTE FASTENER BEFESTIGUNG | HITS | | 4 | | | 0.31 |
| 12 | 90021960 | KIINNIKE FÄSTE FASTENER BEFESTIGUNG | HITS | | 2 | | | 0.3 |
| 13 | 90010442 | KIINNIKE FÄSTE FASTENER BEFESTIGUNG | L14X30-72 | L=72 | 4 | | | 0.07 |
| 14 | 90010443 | KUMI GUMMI RUBBER GUMMI | | 55x40 | 4 | | | 0.01 |
| 15 | 90021961 | KUMI GUMMI RUBBER GUMMI | 5X40-190 | 190x40 | 2 | | | |
| 16 | 90013489 | KUMI GUMMI RUBBER GUMMI | | 220x40 | 4 | | | |
| 17 | 3100185 | LAAKERI LAGER BEARING LAGER | WB 802 7060 | | 2 | | | 0.27 |
| 18 | 3010685 | RUUVI SKRUV SCREW SCHRAUBE | KKR M10X25 8.8 DIN 912 ZN | | 12 | | | 0 |
| 19 | 3010138 | RUUVI SKRUV SCREW SCHRAUBE | KKR M10X60 8.8 ZN DIN 912 | | 4 | | | 0 |
| 20 | 3010192 | RUUVI SKRUV SCREW SCHRAUBE | KKR M10 X 20 8.8 ZN DIN 912 | | 4 | | | 0 |
| 21 | 3030003 | ALUSLEVY BRICKA WASHER UNTERLEGSCHIEBE | M10/11 ZN DIN 126 | | 20 | | | 0 |
| 22 | 3050003 | RASVANIPPA SMÖR.JNIPPEL GREASE NIPPLE SCHMIERNIPPEL | M8X1.25 DIN 71412 | | 2 | | | 0 |
| 100 | 3131151 | LETKU SLANG HOSE SCHLAUCH | 5601-12/HI33-12/5601-12. L=1200 | | 2 | | | |

90022562

NOSTOPUOMI





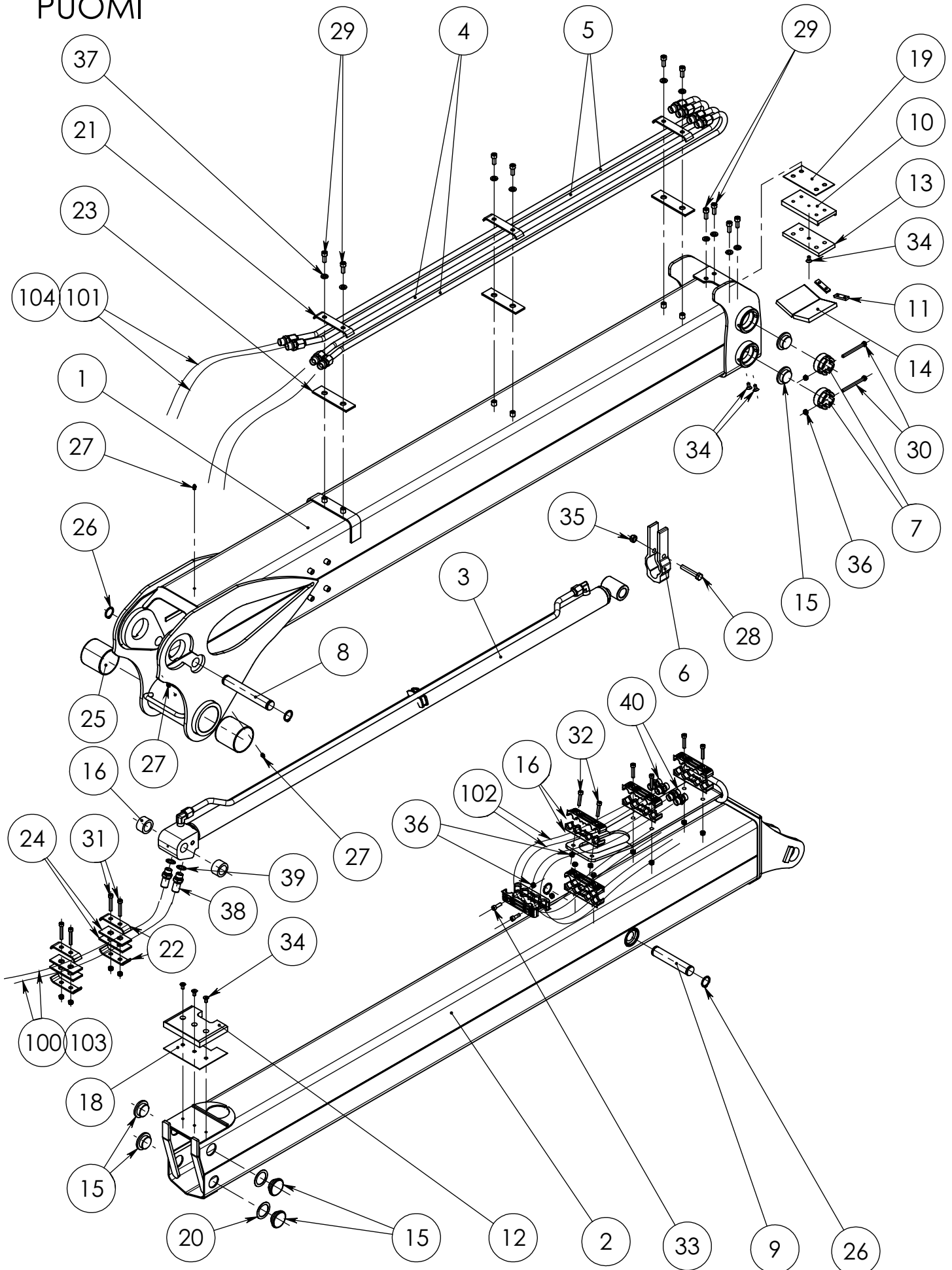
SPARE PART LIST

| | | | |
|---------------|-----------------|----------|------------|
| Item code | 90022562 | Revision | - |
| Title | NOSTOJUOMI | Date | 02.06.2008 |
| Specification | HYTTIVAR 2010 L | | |

| Pos | Item code | Title | Specification | Dimensions | Pc | Amount | Unit | Nto Weight |
|-----|-----------|--|---------------------------------|------------|----|--------|------|------------|
| 1 | 90022559 | NOSTOJUOMI LYFTBOM LIFT BOOM HUBARM | KONESTUS 2010L | | 1 | | | 306.44 |
| 2 | 90021993 | PUTKI RÖR PIPE ROHR | 1 OIKEA KOK | | 1 | | | 4.42 |
| 3 | 90022010 | PUTKI RÖR PIPE ROHR | 1 VASEN KOK | | 1 | | | 4.44 |
| 4 | 90021996 | PUTKI RÖR PIPE ROHR | 2 OIKEA KOK | | 1 | | | 2.94 |
| 5 | 90021994 | PUTKI RÖR PIPE ROHR | 3 OIKEA KOK | | 1 | | | 3.3 |
| 6 | 90022012 | PUTKI RÖR PIPE ROHR | 3 VASEN KOK | | 1 | | | 3.43 |
| 7 | 90021997 | PUTKI RÖR PIPE ROHR | 4 OIKEA KOK | | 1 | | | 3.27 |
| 8 | 90022014 | PUTKI RÖR PIPE ROHR | 4 VASEN KOK | | 1 | | | 3.46 |
| 9 | 90021992 | PUTKI RÖR PIPE ROHR | 5 OIKEA KOK | | 1 | | | 2.57 |
| 10 | 90022018 | PUTKI RÖR PIPE ROHR | 5 VASEN KOK | | 1 | | | 2.96 |
| 11 | 90021956 | KIINNIKE FÄSTE FASTENER BEFESTIGUNG | HITS | | 4 | | | 0.31 |
| 12 | 90021960 | KIINNIKE FÄSTE FASTENER BEFESTIGUNG | HITS | | 2 | | | 0.3 |
| 13 | 90010442 | KIINNIKE FÄSTE FASTENER BEFESTIGUNG | L14X30-72 | L=72 | 4 | | | 0.07 |
| 14 | 90010443 | KUMI GUMMI RUBBER GUMMI | | 55x40 | 4 | | | 0.01 |
| 15 | 90021961 | KUMI GUMMI RUBBER GUMMI | 5X40-190 | 190x40 | 2 | | | |
| 16 | 90013489 | KUMI GUMMI RUBBER GUMMI | | 220x40 | 4 | | | |
| 17 | 3100185 | LAAKERI LAGER BEARING LAGER | WB 802 7060 | | 2 | | | 0.27 |
| 18 | 3010685 | RUUVI SKRUV SCREW SCHRAUBE | KKR M10X25 8.8 DIN 912 ZN | | 12 | | | 0 |
| 19 | 3010192 | RUUVI SKRUV SCREW SCHRAUBE | KKR M10 X 20 8.8 ZN DIN 912 | | 4 | | | 0 |
| 20 | 3030003 | ALUSLEVY BRICKA WASHER UNTERLEGSCHIBE | M10/11 ZN DIN 126 | | 18 | | | 0 |
| 21 | 3050003 | RASVANIPPA SMÖRJNIPPEL GREASE NIPPLE SCHMIERNIPPEL | M8X1.25 DIN 71412 | | 2 | | | 0 |
| 22 | 3010274 | RUUVI SKRUV SCREW SCHRAUBE | KKR M10 X 70 8.8 ZN DIN 912 | | 2 | | | 0 |
| 100 | 3131151 | LETKU SLANG HOSE SCHLAUCH | 5601-12/HI33-12/5601-12. L=1200 | | 2 | | | |

90022770

PUOMI



18, 19, 20 vain tarvittaessa



SPARE PART LIST

| | | | |
|---------------|----------|----------|------------|
| Item code | 90022770 | Revision | - |
| Title | PUOMI | Date | 15.09.2008 |
| Specification | 1-JATK | | |

| Pos | Item code | Title | Specification | Dimensions | Pc | Amount | Unit | Nto Weight |
|-----|-----------|--|----------------------------|------------|----|--------|------|------------|
| 1 | 90022758 | PUOMI BOM BOOM ARM | 2010L KONEISTUS | | 1 | | | 120.6 |
| 2 | 90022759 | JATKE UTSKJUT EXTENSION AUSSCHUB | HIIS | | 1 | | | 74.78 |
| 3 | 28586001 | SYLINTERI CYLINDER ZYLINDER | 50/30X1.600 | | 1 | | | 6.55 |
| 4 | 90019691 | PUTKI RÖR PIPE ROHR | OIKEA KOK | | 2 | | | 1.92 |
| 5 | 90019692 | PUTKI RÖR PIPE ROHR | VASEN KOK | | 2 | | | 1.92 |
| 6 | 90017083 | TUKI STÖD SUPPORT STÜTZE | | 193x72 | 1 | | | 1.1 |
| 7 | 90016090 | KIINNIKE FÄSTE FASTENER BEFESTIGUNG | | L=37 | 4 | | | 0.35 |
| 8 | 90021934 | AKSELI AXEL AXLE ACHSE | 30X196 | L=98 | 1 | | | 1.08 |
| 9 | 90014885 | AKSELI AXEL AXLE ACHSE | 30-154 | L=98 | 1 | | | 0.85 |
| 10 | 90014762 | KIINNIKE FÄSTE FASTENER BEFESTIGUNG | | L=182 | 1 | | | 1.01 |
| 11 | 90010345 | PIDIKE FÄSTE HOLDER GESTELL | | 52x15 | 2 | | | 0.03 |
| 12 | 90021936 | LIUKUPALA GLIDKLACK GLIDE PAD GLEITLAGER | 20X120X155 | 155x120 | 1 | | | 0.31 |
| 13 | 90014766 | LIUKUPALA GLIDKLACK GLIDE PAD GLEITLAGER | 50X130 | 155x70 | 1 | | | 0.12 |
| 14 | 90012374 | LIUKUPALA GLIDKLACK GLIDE PAD GLEITLAGER | 70X 120 | 120x70 | 2 | | | 0.1 |
| 15 | 90011001 | LIUKUPALA GLIDKLACK GLIDE PAD GLEITLAGER | D=55-19/7 | L=20 | 8 | | | 0.03 |
| 16 | 90021928 | HOLKKI HYLSA SLEEVE ACHSHALTER | 45/31-26 | L=28 | 2 | | | 0.02 |
| 17 | 3301209 | KIINNIKE FÄSTE FASTENER BEFESTIGUNG | LETKUNKIINNIKE | | 10 | | | 0.26 |
| 18 | 90017085 | LEVY PLÁT PLATE PLATTE | 119X155 | 155x119 | 1 | | | 0.13 |
| 19 | 90015125 | ALUSLEVY BRICKA WASHER UNTERLEGSCHEIBE | 2.0 X 80 X 140 | 140x80 | 1 | | | 0.17 |
| 20 | 21039422 | ALUSLEVY BRICKA WASHER UNTERLEGSCHEIBE | 1XD=55 | 55x55 | 2 | | | 0.01 |
| 21 | 90012248 | KIINNIKE FÄSTE FASTENER BEFESTIGUNG | 4X30-152 | L=152 | 3 | | | 0.14 |
| 22 | 90013168 | KIINNIKE FÄSTE FASTENER BEFESTIGUNG | 4X30-112 | L=112 | 4 | | | 0.1 |
| 23 | 90010444 | KUMI GUMMI RUBBER GUMMI | 5X40-145 | 145x40 | 3 | | | |
| 24 | 90013174 | KUMI GUMMI RUBBER GUMMI | | 100x40 | 4 | | | 0.02 |
| 25 | 3100187 | LAAKERI LAGER BEARING LAGER | WB 802 8080 | | 2 | | | 0.41 |
| 26 | 3060092 | PIDÄTINRENGAS LÄSRING SNAPRING SPRENGRING | AS30X2 DIN 471 | | 4 | | | 0 |
| 27 | 3050003 | RASVANIPPA SMÖRJNIPPEL GREASE NIPPLE SCHMIERNIPPEL | M8X1,25 DIN 71412 | | 3 | | | 0 |
| 28 | 3010152 | RUUVI SKRUV SCREW SCHRAUBE | KR M12 X 70 8.8 ZN DIN 931 | | 1 | | | 0 |
| 29 | 3010685 | RUUVI SKRUV SCREW SCHRAUBE | KKR M10X25 8.8 DIN 912 ZN | | 10 | | | 0 |
| 30 | 3010328 | RUUVI SKRUV SCREW SCHRAUBE | KR M8 X 90 8.8 ZN DIN 931 | | 4 | | | 0 |
| 31 | 3010050 | RUUVI SKRUV SCREW SCHRAUBE | KKR M8 X 50 8.8 ZN DIN 912 | | 4 | | | 0 |
| 32 | 3010250 | RUUVI SKRUV SCREW SCHRAUBE | KKR M8 X 40 8.8 ZN DIN 912 | | 6 | | | 0 |
| 33 | 3010291 | RUUVI SKRUV SCREW SCHRAUBE | KKR M8 X 25 8.8 ZN DIN 912 | | 4 | | | 0 |
| 34 | 3010190 | RUUVI SKRUV SCREW SCHRAUBE | KKR M8X16 10.9 DIN 7991 | | 8 | | | 0 |
| 35 | 3020005 | MUTTERI MUTTER NUT MUTTER | KM M12 ZN DIN 985 | | 1 | | | 0 |
| 36 | 3020001 | MUTTERI MUTTER NUT MUTTER | KM M8 ZN DIN 985 | | 18 | | | 0 |



SPARE PART LIST

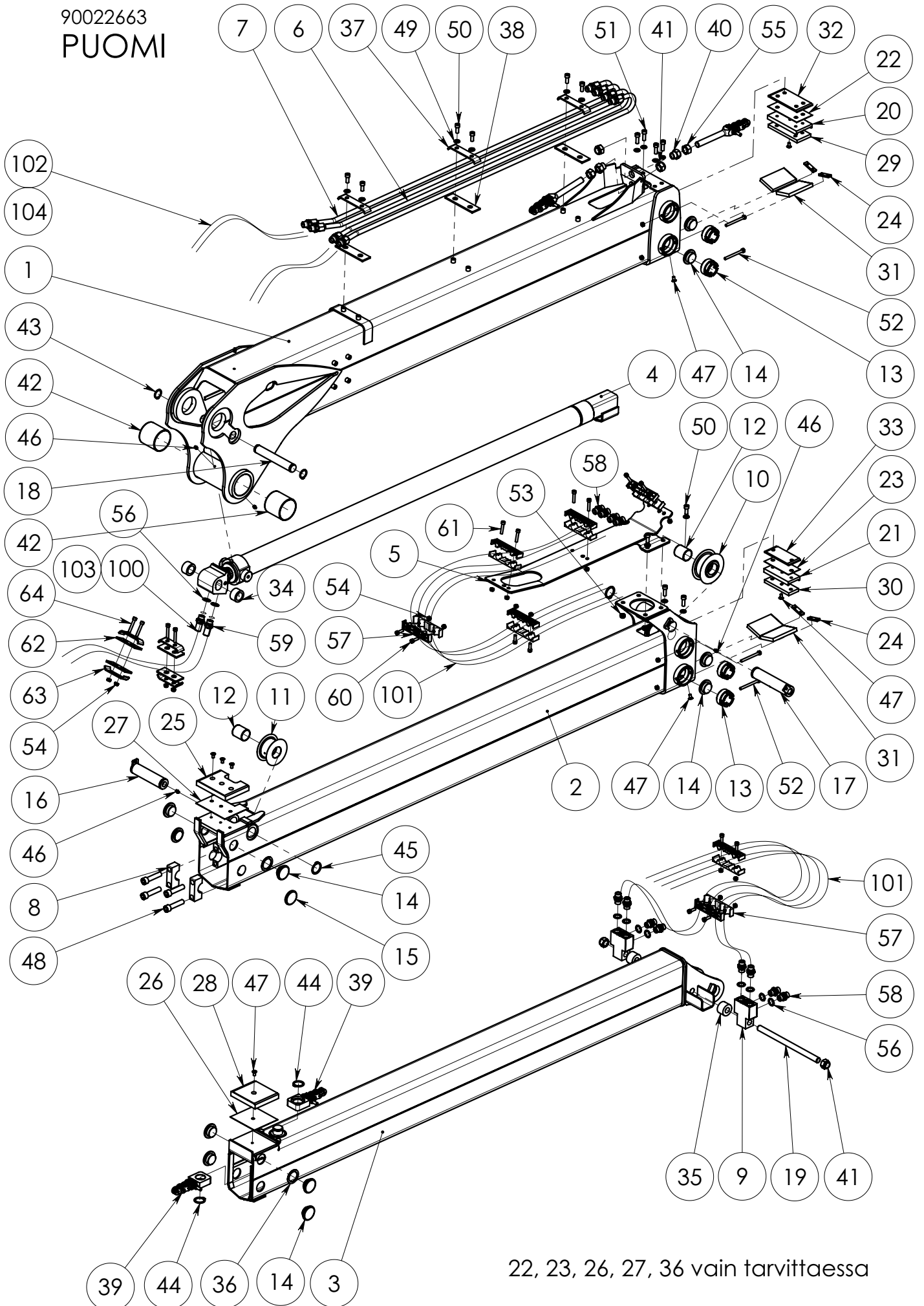
| | | | |
|---------------|----------|----------|------------|
| Item code | 90022770 | Revision | - |
| Title | PUOMI | Date | 15.09.2008 |
| Specification | 1-JATK | | |

| Pos | Item code | Title | Specification | Dimensions | Pc | Amount | Unit | Nfo Weight |
|-----|-----------|--|---------------------------------|------------|----|--------|------|------------|
| 37 | 3030003 | ALUSLEVY BRICKA WASHER UNTERLEGSCHEIBE | M10/11 ZN DIN 126 | | 10 | | | 0 |
| 38 | 3090297 | LIITIN KOPPLINGSSTYCKE CONNECTOR KONNEKTOR | 04000-08 EP | | 2 | | | 0.12 |
| 39 | 3110042 | TIIVISTE TÄITNING SEAL DICHTUNG | USIT R-08 (R1/2") | | 2 | | | 0.01 |
| 40 | 3090019 | LIITIN KOPPLINGSSTYCKE CONNECTOR KONNEKTOR | 04000-08 (R1/2") | | 4 | | | 0.1 |
| 100 | 3130737 | LETKU SLANG HOSE SCHLAUCH | 5701-08/H184-08/5701-08 L=900 | | 2 | | | 0.74 |
| 101 | 3130456 | LETKU SLANG HOSE SCHLAUCH | 5701-08/H184-08/5701-08/L= 1050 | | 4 | | | 0.84 |
| 102 | 3130473 | LETKU SLANG HOSE SCHLAUCH | 5701-08/H184-08/5701-08/L= 1900 | | 4 | | | |
| 103 | 3130979 | SUOJA SKYDD COVER SCHUTZ | D=32 MUSTA | | 2 | | m | 0.18 |
| 104 | 3130734 | SUOJA SKYDD COVER SCHUTZ | D=50 | | 2 | | m | 0.33 |

VARAOSAT \ RESERVDLAR \ SPARE PARTS \ ERSATZTEIL

90022663

PUOMI



22, 23, 26, 27, 36 vain tarvittaessa



OSALUETTELO

| | | | |
|---------------|---------------------------|---------|------------|
| Nimikenumero | 90022663 | Revisio | - |
| Nimitys | PUOMI | Päiväys | 04.07.2008 |
| Specifikaatio | SIIRTOUOMI 2-JATK 2010 LT | Liitty | |

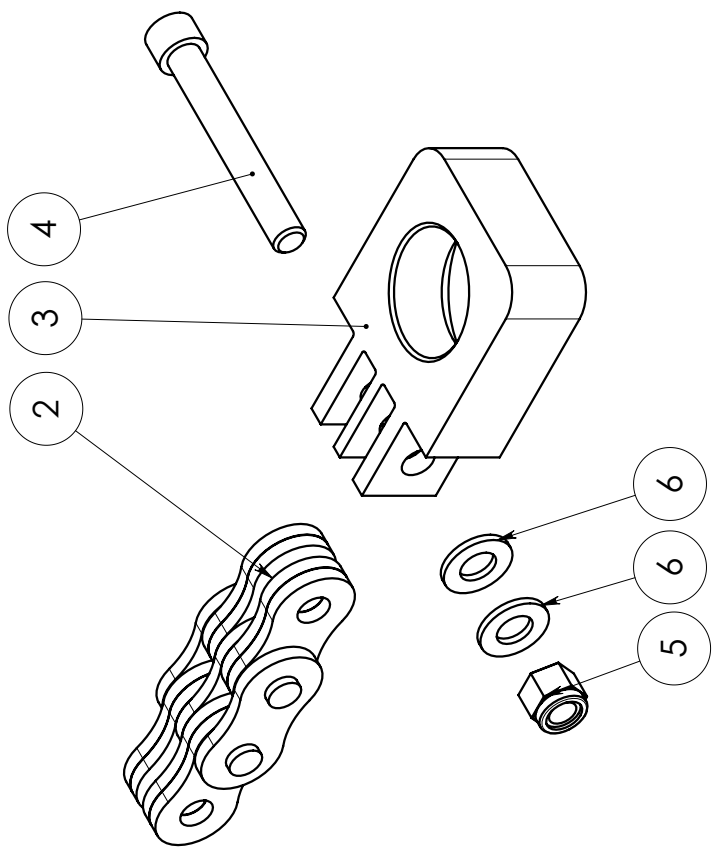
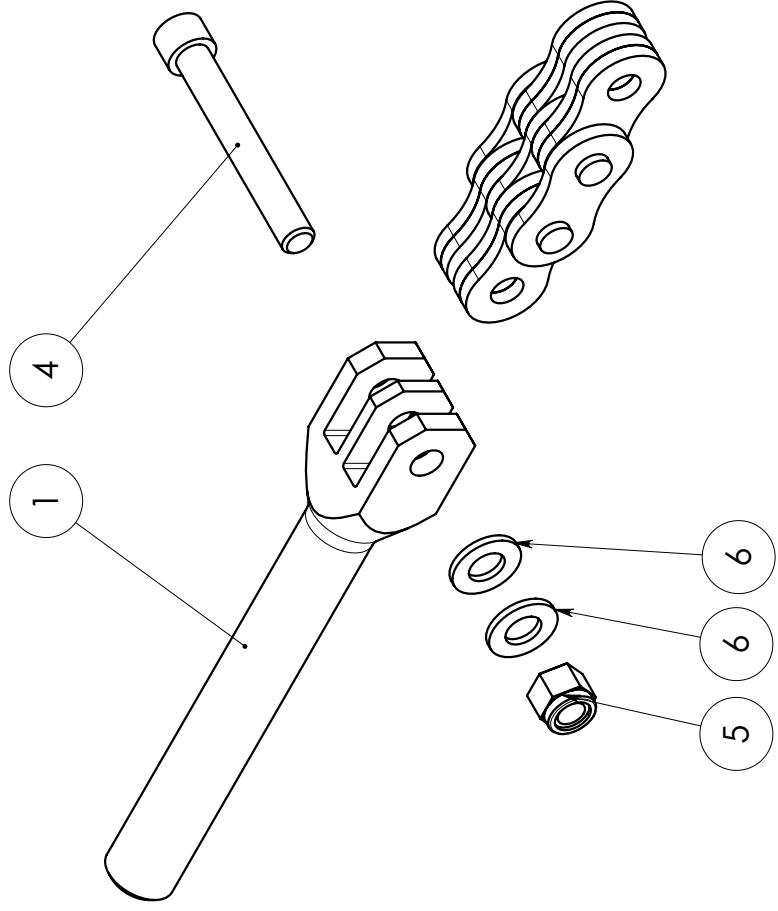
| Pos | Nimike n:o | Nimitys + Specifikaatio | Mitat | Kpl | Määrä | Yks | Nto paino | Huom |
|-----|------------|-------------------------|---------|-----|-------|-----|-----------|------|
| 1 | 90022604 | PUOMI KONEISTUS | | 1 | | | 122.31 | |
| 2 | 90022614 | JATKE 1 KON 2010L | | 1 | | | 75.64 | |
| 3 | 90022621 | JATKE 2 HITS | | 1 | | | 55.73 | |
| 4 | 28581001 | SYLINTERI 70/40-1600 | | 1 | | | 25.93 | |
| 5 | 90021904 | OHJAIN HITS | | 1 | | | 6.00 | |
| 6 | 90021906 | PUTKI 1 OIKEA KOK | | 2 | | | 1.75 | |
| 7 | 90021908 | PUTKI 1 VASEN KOK | | 2 | | | 1.75 | |
| 8 | 90021909 | KANSI | 90x40 | 2 | | | 0.40 | |
| 9 | 90021920 | LIITIN | L=80 | 2 | | | 0.56 | |
| 10 | 90021697 | PYÖRÄ RI", 3X4 | L=53 | 1 | | | 1.96 | |
| 11 | 90010136 | PYÖRÄ D=75 | L=53 | 1 | | | 1.34 | |
| 12 | 3100188 | LAAKERI WB 802 4050 | | 2 | | | 0.10 | |
| 13 | 90016090 | KIINNIKE | L=37 | 8 | | | 0.35 | |
| 14 | 90011001 | LIUKUPALA D=55-19/7 | L=20 | 14 | | | 0.03 | |
| 15 | 90020689 | LIUKUPALA 40X55-7X5 | L=20 | 2 | | | 0.03 | |
| 16 | 90021930 | AKSELI 40-156 HITS | | 1 | | | 1.52 | |
| 17 | 90021933 | AKSELI 40-184 HITS | | 1 | | | 1.79 | |
| 18 | 90021934 | AKSELI 30X196 | L=98 | 1 | | | 1.08 | |
| 19 | 90021935 | RUUVI M20-320 | L=323 | 1 | | | 0.79 | |
| 20 | 90014762 | KIINNIKE | L=182 | 1 | | | 1.01 | |
| 21 | 90014763 | KIINNIKE | L=132 | 1 | | | 0.65 | |
| 22 | 90015124 | LEVY 80 X 155 | 155x80 | 1 | | | 0.09 | |
| 23 | 90015142 | LEVY 60 X 130 | 130x60 | 1 | | | 0.06 | |
| 24 | 90010345 | PIDIKE | 52x15 | 4 | | | 0.03 | |
| 25 | 90021936 | LIUKUPALA 20X120X155 | 155x120 | 1 | | | 0.31 | |
| 26 | 90017020 | ALUSLEVY 1X119X130 | 130x119 | 1 | | | 0.12 | |
| 27 | 90017085 | LEVY 119X155 | 155x119 | 1 | | | 0.13 | |
| 28 | 90021937 | LIUKUPALA 20X120X130 | 130x120 | 1 | | | 0.29 | |
| 29 | 90014766 | LIUKUPALA 50X130 | 155x70 | 1 | | | 0.12 | |
| 30 | 90014770 | LIUKUPALA 50X130 | 130x50 | 1 | | | 0.07 | |
| 31 | 90012374 | LIUKUPALA 70X 120 | 120x70 | 4 | | | 0.10 | |
| 32 | 90021950 | LEVY | 155x80 | 1 | | | 0.07 | |
| 33 | 90021952 | LEVY | 130x60 | 1 | | | 0.04 | |
| 34 | 90021928 | HOLKKI 45/31-26 | L=28 | 2 | | | 0.02 | |
| 35 | 90021953 | HOLKKI 45/21-30 | L=32 | 2 | | | 0.04 | |
| 36 | 21039422 | ALUSLEVY 1XD=55 | 55x55 | 2 | | | 0.01 | |



OSALUETTELO

| | | | |
|---------------|---------------------------|---------|------------|
| Nimikenumero | 90022663 | Revisio | - |
| Nimitys | PUOMI | Päiväys | 04.07.2008 |
| Specifikaatio | SIIRTOUOMI 2-JATK 2010 LT | Liitty | |

| Pos | Nimike n:o | Nimitys + Specifikaatio | Mitat | Kpl | Määrä | Yks | Nto paino | Huom |
|-----|------------|--------------------------------------|--------|-----|-------|-----|-----------|------|
| 37 | 90012248 | KIINNIKE 4X30-152 | L=152 | 3 | | | 0.14 | |
| 38 | 90010444 | KUMI 5X40-145 | 145x40 | 3 | | | | |
| 39 | 90021892 | KETJU 3X4 (81 LENKKIÄ) KOK | | 4 | | | 1.81 | |
| 40 | 90017520 | MUTTERI M20-30 | L=32 | 2 | | | 0.09 | |
| 41 | 3020009 | MUTTERI KM M20 ZN DIN 985 | | 4 | | | 0.00 | |
| 42 | 3100187 | LAAKERI WB 802 8080 | | 2 | | | 0.41 | |
| 43 | 3060092 | PIDÄTINRENGAS AS30X2 DIN 471 | | 2 | | | 0.00 | |
| 44 | 3060091 | PIDÄTINRENGAS AS 35X2.5 DIN 471 | | 2 | | | 0.00 | |
| 45 | 3060100 | PIDÄTINRENGAS AS 40X2.5 DIN 471 | | 2 | | | 0.00 | |
| 46 | 3050003 | RASVANIPPA M8X1.25 DIN 71412 | | 5 | | | 0.00 | |
| 47 | 3010190 | RUUVI KKR M8X16 10.9 DIN 7991 | | 14 | | | 0.00 | |
| 48 | 3010277 | RUUVI KKR M16 X 70 12.9 ZN DIN 912 | | 4 | | | 0.00 | |
| 49 | 3030003 | ALUSLEVY M10/11 ZN DIN 126 | | 16 | | | 0.00 | |
| 50 | 3010685 | RUUVI KKR M10X25 8.8 DIN 912 ZN | | 10 | | | 0.00 | |
| 51 | 3010248 | RUUVI KKR M10 X 30 8.8 ZN DIN 912 | | 6 | | | 0.00 | |
| 52 | 3010328 | RUUVI KR M8 X 90 8.8 ZN DIN 931 | | 8 | | | 0.00 | |
| 53 | 3020004 | MUTTERI KM M10 ZN DIN 985 | | 4 | | | 0.00 | |
| 54 | 3020001 | MUTTERI KM M8 ZN DIN 985 | | 26 | | | 0.00 | |
| 55 | 3020032 | MUTTERI KM M20 ZN DIN 934/8 | | 2 | | | 0.00 | |
| 56 | 3110042 | TIIVISTE USIT R-08 (R1/2") | | 10 | | | 0.01 | |
| 57 | 3301209 | KIINNIKE LETKUNKIINNIKE | | 14 | | | 0.19 | |
| 58 | 3090019 | LIITIN 04000-08 (R1/2") | | 12 | | | 0.10 | |
| 59 | 3090297 | LIITIN 04000-08 EP | | 2 | | | 0.12 | |
| 60 | 3010291 | RUUVI KKR M8 X 25 8.8 ZN DIN 912 | | 8 | | | 0.00 | |
| 61 | 3010250 | RUUVI KKR M8 X 40 8.8 ZN DIN 912 | | 6 | | | 0.00 | |
| 62 | 90013174 | KUMI | 100x40 | 4 | | | 0.02 | |
| 63 | 90013168 | KIINNIKE 4X30-112 | L=112 | 4 | | | 0.10 | |
| 64 | 3010050 | RUUVI KKR M8 X 50 8.8 ZN DIN 912 | | 4 | | | 0.00 | |
| 100 | 3130737 | LETKU 5701-08/HI84-08/5701-08 L=900 | | 2 | | | 0.74 | |
| 101 | 3132566 | LETKU 5701-08/HI84-08/5701-08/L=2070 | | 8 | | | | |
| 102 | 3130456 | LETKU 5701-08/HI84-08/5701-08/L=1050 | | 4 | | | 0.84 | |
| 103 | 3130979 | SUOJA D=32 MUSTA | | 2 | .6 | m | 0.18 | |
| 104 | 3130734 | SUOJA D=50 | | 2 | .9 | m | 0.33 | |



90021892 KETJU

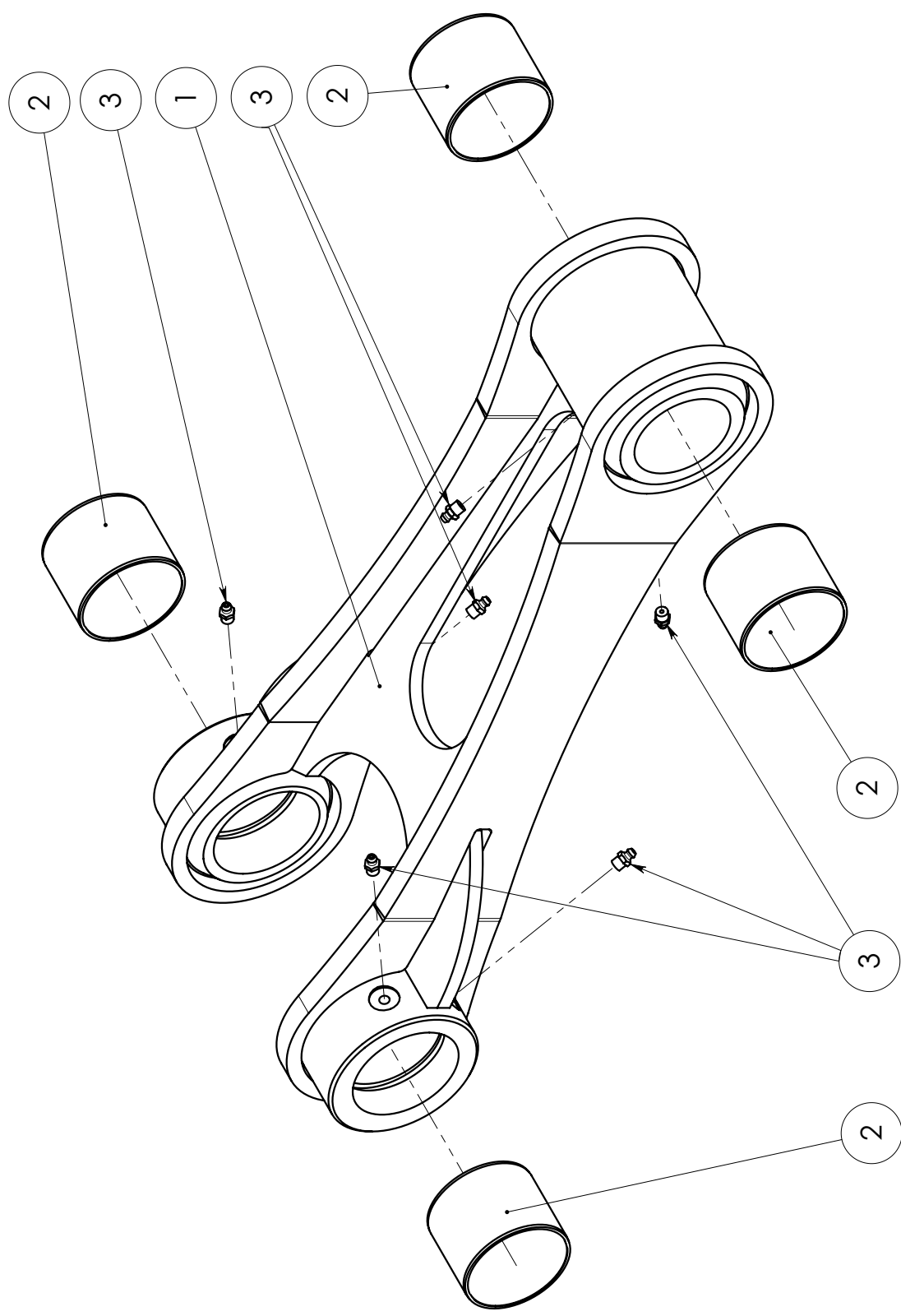
VARAOSAT \ RESERVDELAR \ SPARE PARTS \ ERSATZTEIL



SPARE PART LIST

| | | | |
|---------------|-----------------------|----------|------------|
| Item code | 90021892 | Revision | - |
| Title | KETJU | Date | 20.12.2007 |
| Specification | 3X4 (81 LENKKIÄ) KOK | | |

| Pos | Item code | Title | Specification | Dimensions | Pc | Amount | Unit | Nto weight |
|-----|-----------|--|----------------------|------------|----|--------|------|------------|
| 1 | 90021136 | KIRSTIN SPÄNNARE TENSIONER VERSCHLUSS | R 1" | 185x36 | 1 | | | 0.52 |
| 2 | 3190118 | KETJU KEDJA CHAIN KETTE | R 1" (81 LENKKIÄ) | | 1 | | | 0.33 |
| 3 | 90021137 | LIITIN KOPPLINGSSTYCKE CONNECTOR KONNEKTOR | R 1" | 90x60 | 1 | | | 0.53 |
| 4 | 3010857 | RUUVI SKRUV SCREW SCHRAUBE | UNC 3/8"X2 3/4" 12.9 | | 2 | | | 0.05 |
| 5 | 3020181 | MUTTERI MUTTER NUT MUTTER | UNC 3/8" DIN985 | | 2 | | | |
| 6 | 3030065 | ALUSLEVY BRICKA WASHER UNTERLEGSCHIBE | M10 ZN DIN 125 | | 4 | | | 0 |



90016039 TANKO

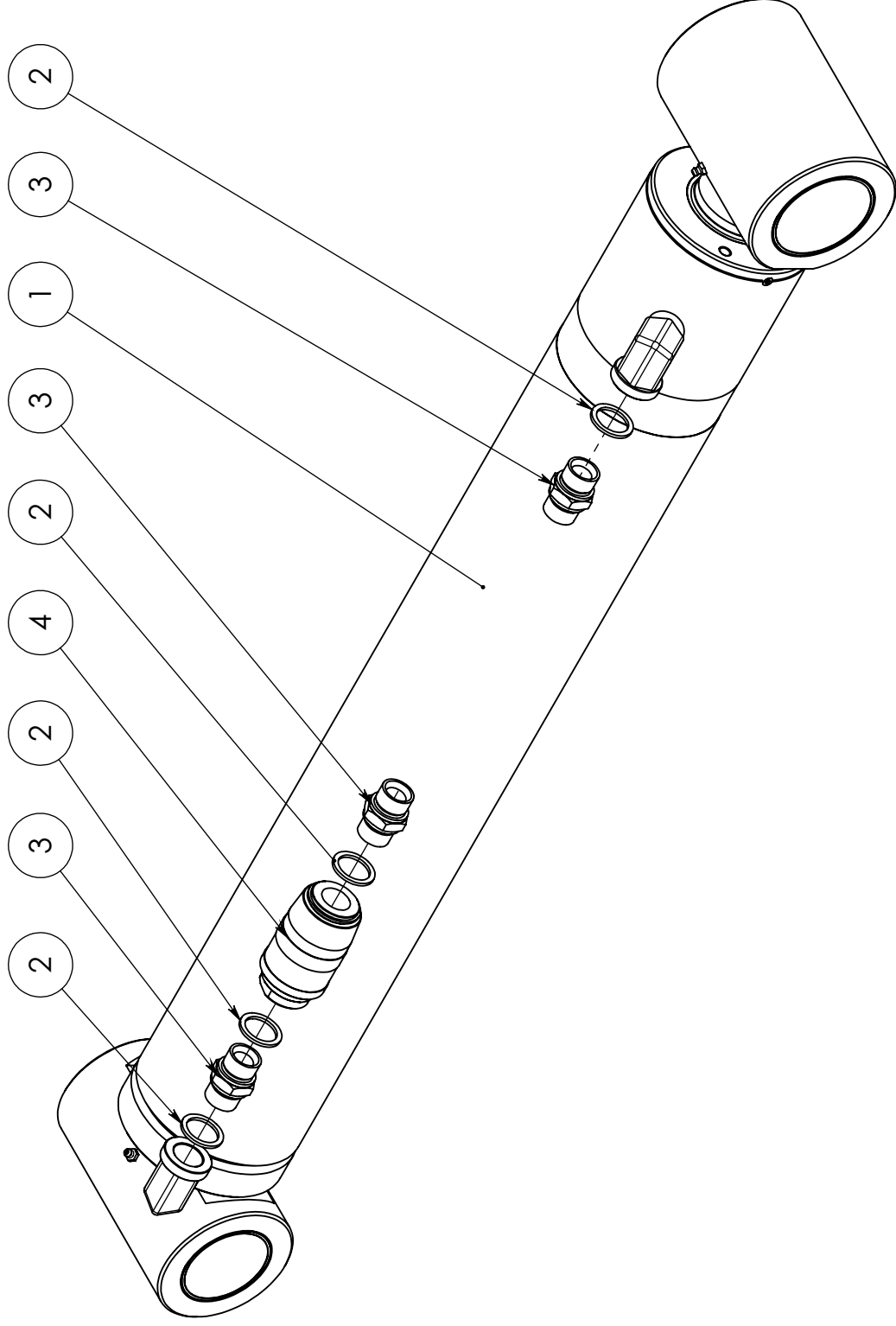
VARAOSAT \ RESERVDELAR \ SPARE PARTS \ ERSATZTEIL



SPARE PART LIST

| | | | |
|---------------|----------|----------|------------|
| Item code | 90016039 | Revision | - |
| Title | TANKO | Date | 10.06.2008 |
| Specification | | | |

| Pos | Item code | Title | Specification | Dimensions | Pc | Amount | Unit | Nto weight |
|-----|-----------|---|-------------------|------------|----|--------|------|------------|
| 1 | 90016034 | TANKO LÄNK LINK GELENK | HITS+KON | | 1 | | | 21.31 |
| 2 | 3100185 | LAAKERI LAGER BEARING LAGER | WB 802 7060 | | 4 | | | 0.27 |
| 3 | 3050003 | RASVANIPPA SMÖR.JNIPPEL GREASE NIPPLE SCHMIERNIPPEL | M8X1,25 DIN 71412 | | 6 | | | 0 |



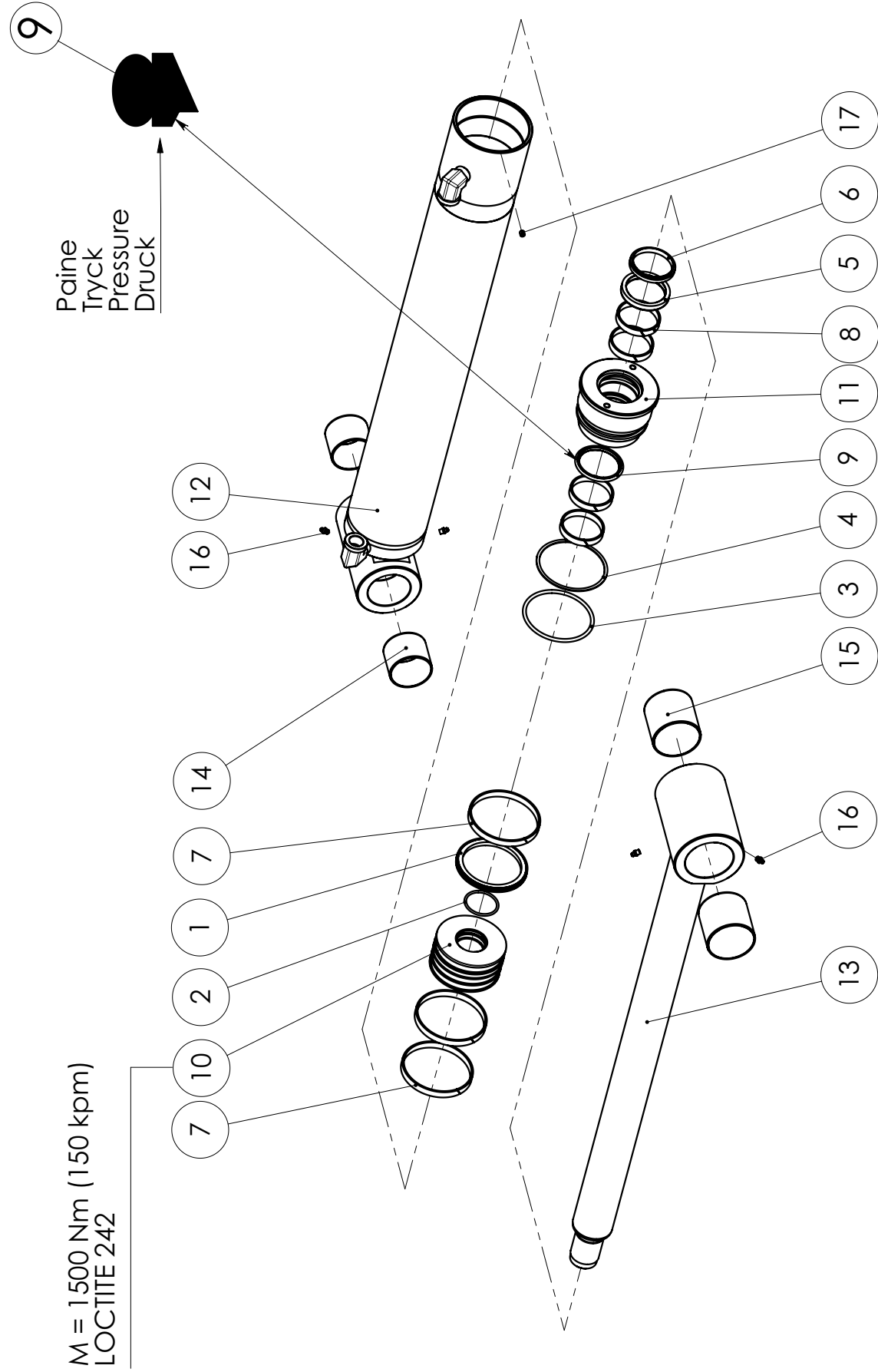
NOSTO-
90022565 SYLINTERI



SPARE PART LIST

| | | | |
|---------------|------------------------------------|----------|------------|
| Item code | 90022565 | Revision | - |
| Title | SYLINTERI | Date | 03.06.2008 |
| Specification | 125/70 X 810 NOSTOSYLINTERI 2010 L | | |

| Pos | Item code | Title | Specification | Dimensions | Pc | Amount | Unit | Nfo Weight |
|-----|-----------|--|-------------------|------------|----|--------|------|------------|
| 1 | 28829001 | SYLINTERI CYLINDER ZYLINDER | 125/70 X 810 | | 1 | | | 64.2 |
| 2 | 3110130 | TIIVISTE TÄJNING SEAL DICHTUNG | USIT R-12 (R3/4") | | 4 | | | 0.01 |
| 3 | 3090185 | LIITIN KOPPLINGSSTYCKE CONNECTOR KONNEKTOR | 04000-12 | | 3 | | | 0.14 |
| 4 | 3120235 | VENTTIILI VENTIL VALVE VENTIL | | | 1 | | | 1.24 |



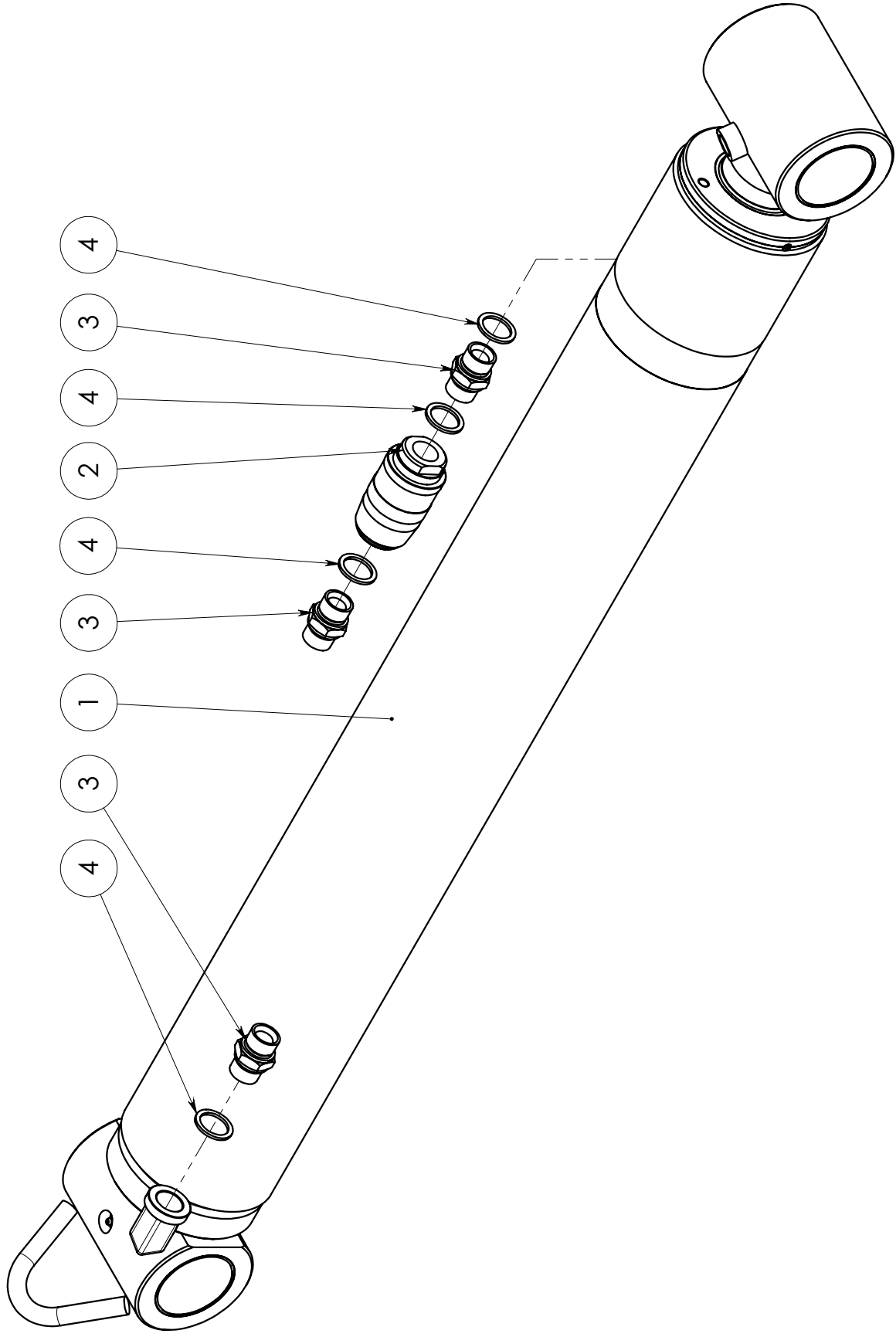
28829001 SYLINTERI



SPARE PART LIST

| | | | |
|---------------|--------------|----------|------------|
| Item code | 28829001 | Revision | - |
| Title | SYLINTERI | Date | 29.05.2008 |
| Specification | 125/70 X 810 | | |

| Pos | Item code | Title | Specification | Dimensions | Pc | Amount | Unit | Nto Weight |
|-----|-----------|--|---------------------------|------------|----|--------|------|------------|
| 1 | 3110732 | TIIVISTE TÄTNING SEAL DICHTUNG | OK 125/104X8 | | 1 | | | 0.23 |
| 2 | 3110203 | TIIVISTE TÄTNING SEAL DICHTUNG | O 53.57 X 3.53 90 SH | | 1 | | | 0.01 |
| 3 | 3110451 | TIIVISTE TÄTNING SEAL DICHTUNG | O 114.2 X 5.7 90 SH | | 1 | | | 0.08 |
| 4 | 3110452 | TIIVISTE TÄTNING SEAL DICHTUNG | TR 125/115X1.7 PU | | 1 | | | 0.03 |
| 5 | 3110195 | TIIVISTE TÄTNING SEAL DICHTUNG | HALLITE 621 70/85X11.4 | | 1 | | | 0.12 |
| 6 | 3110196 | TIIVISTE TÄTNING SEAL DICHTUNG | GA 70/80 X 7/10 | | 1 | | | 0.07 |
| 7 | 3110682 | OHJAIN STYRNING GUIDANCE STEUERUNG | E/PWR 125/119X13 | | 3 | | | 0.11 |
| 8 | 3110733 | OHJAIN STYRNING GUIDANCE STEUERUNG | I/PWR 70/76X13 | | 4 | | | 0.07 |
| 9 | 3110197 | TIIVISTE TÄTNING SEAL DICHTUNG | PO-55-150-0700 | | 1 | | | 0.07 |
| 10 | 28579201 | MÄNTÄ KOLV PISTON KOLBEN | 125 (OK) | L=83 | 1 | | | 4.88 |
| 11 | 28579202 | OHJAIN STYRNING GUIDANCE STEUERUNG | 125/70 | L=103 | 1 | | | 5.56 |
| 12 | 28829101 | SYLINTERIPUTKI CYLINDER RÖR CYLINDER BARREL ZYLINDERROHR | 127/70 X 810 | | 1 | | | 12.48 |
| 13 | 28829204 | MÄNNÄNVARSI KOLVSTÄNG PISTON ROD KOLBENSTANGE | 125/70 X 810 | | 1 | | | 38.7 |
| 14 | 3100185 | LAAKERI LAGER BEARING LAGER | WB 802 7060 | | 2 | | | 0.27 |
| 15 | 3100187 | LAAKERI LAGER BEARING LAGER | WB 802 8080 | | 2 | | | 0.41 |
| 16 | 3050003 | RASVANIPPA SMÖRJNIPPEL GREASE NIPPLE SCHMIERNIPPEL | M8X1.25 DIN 71412 | | 4 | | | 0 |
| 17 | 3010175 | RUUVI SKRUVJ SCREW SCHRAUBE | KK M8 X 10 ZN DIN 914 | | 1 | | | 0 |
| 1-9 | 3110734 | TIIVISTE TÄTNING SEAL DICHTUNG | SARJA (125/70 2010/2010T) | | 1 | | sfj | |



90017040 SYLINTERI

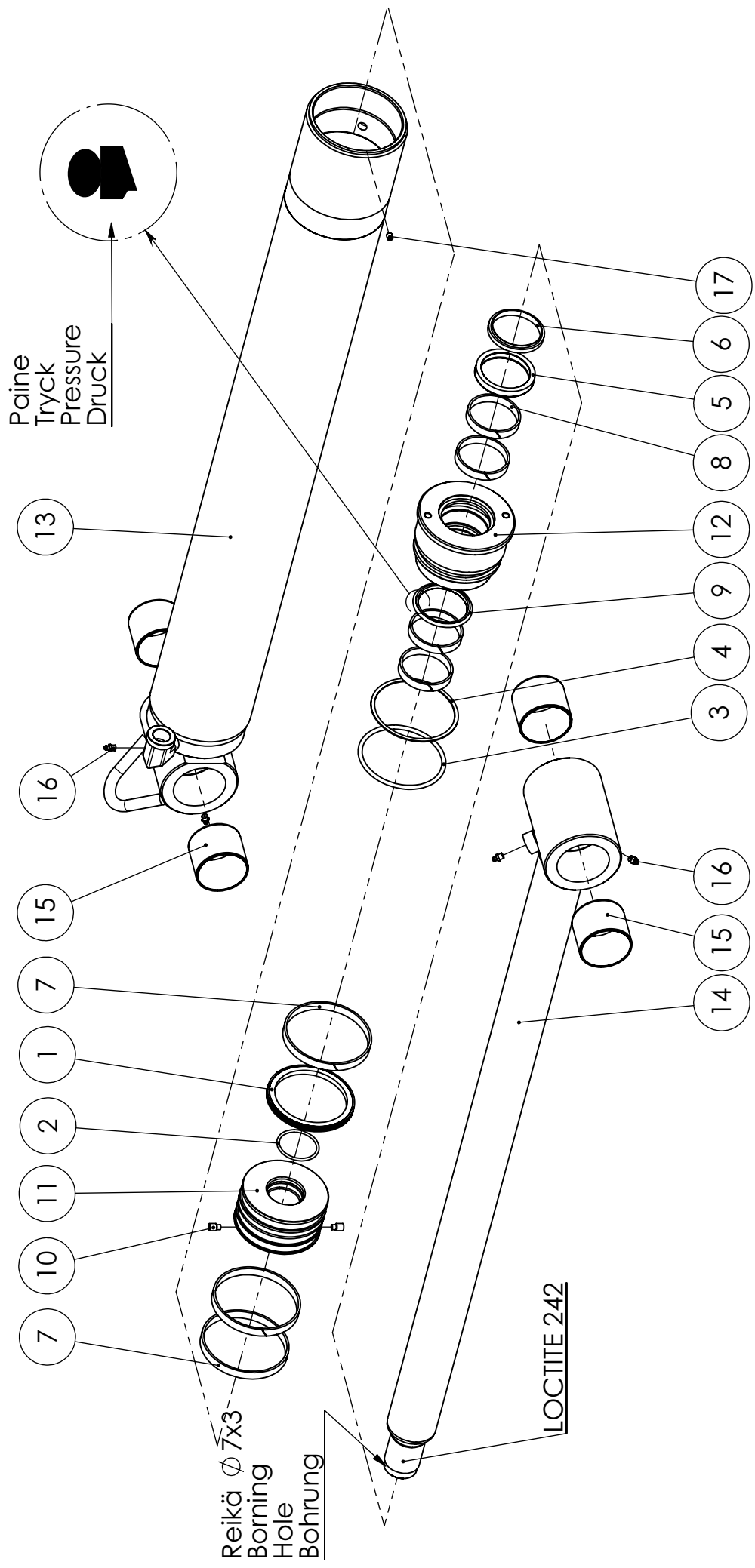
VARAOSAT \ RESERVDELAR \ SPARE PARTS \ ERSATZTEIL



SPARE PART LIST

| | | | |
|---------------|------------------------|----------|------------|
| Item code | 90017040 | Revision | - |
| Title | SYLINTERI | Date | 11.08.2008 |
| Specification | 125X70X 1020 VARUSTELU | | |

| Pos | Item code | Title | Specification | Dimensions | Pc | Amount | Unit | Nto weight |
|-----|-----------|--|-------------------|------------|----|--------|------|------------|
| 1 | 28580001 | SYLINTERI CYLINDER ZYLINDER | 125/70 X 1020 | | 1 | | | 27.06 |
| 2 | 3120235 | VENTIILI VENTIL VALVE VENTIL | | | 1 | | | 1.24 |
| 3 | 3090185 | LIITIN KOPPLINGSSTYCKE CONNECTOR KONNEKTOR | 04000-12 | | 3 | | | 0.14 |
| 4 | 3110130 | TIIVISTE TÄTNIING SEAL DICHTUNG | USIT R-12 (R3/4") | | 4 | | | 0.01 |



28580001 SYLINTERI

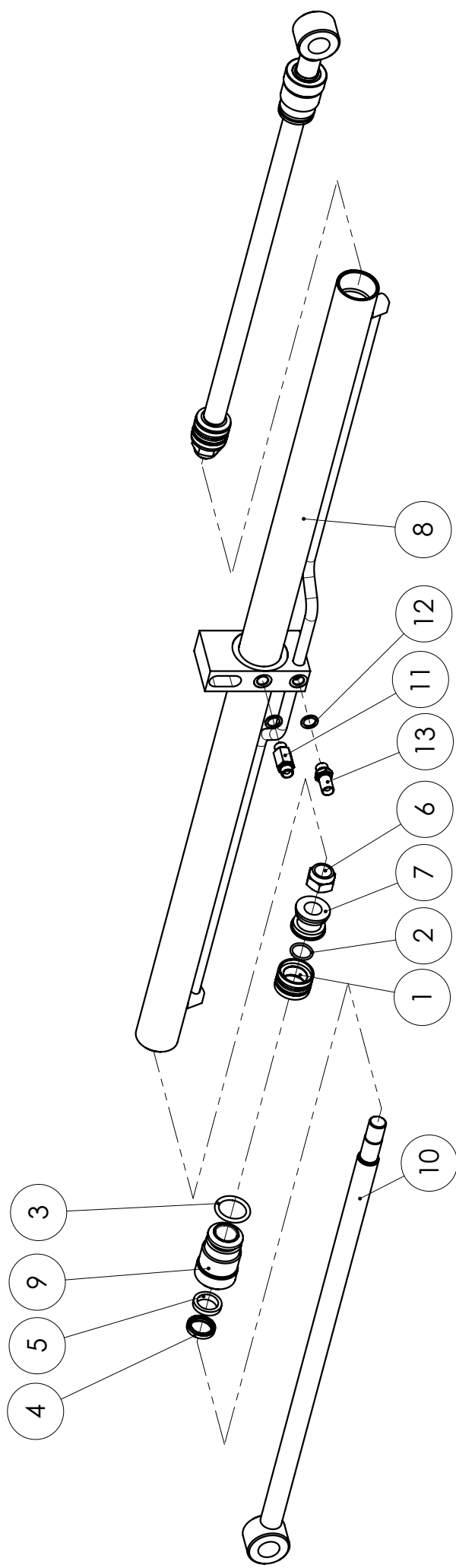
VARAOSAT \ RESERVDELAR \ SPARE PARTS \ ERSATZTEIL



SPARE PART LIST

| | | | |
|---------------|---------------|----------|------------|
| Item code | 28580001 | Revision | - |
| Title | SYLINTERI | Date | 01.11.2007 |
| Specification | 125/70 X 1020 | | |

| Pos | Item code | Title | Specification | Dimensions | Pc | Amount | Unit | Nfo Weight |
|-----|-----------|--|------------------------------------|------------|----|--------|------|------------|
| 1 | 3110732 | TIIVISTE TÄTNING SEAL DICHTUNG | OK 125/104X8 | | 1 | | | 0.23 |
| 2 | 3110203 | TIIVISTE TÄTNING SEAL DICHTUNG | O 53.57 X 3.53 90 SH | | 1 | | | 0.01 |
| 3 | 3110451 | TIIVISTE TÄTNING SEAL DICHTUNG | O 114.2 X 5.7 90 SH | | 1 | | | 0.08 |
| 4 | 3110452 | TIIVISTE TÄTNING SEAL DICHTUNG | TR 125/115X1.7 PU | | 1 | | | 0.03 |
| 5 | 3110195 | TIIVISTE TÄTNING SEAL DICHTUNG | HALLITE 621 70/85X11.4 | | 1 | | | 0.12 |
| 6 | 3110196 | TIIVISTE TÄTNING SEAL DICHTUNG | GA 70/80 X 7/10 | | 1 | | | 0.07 |
| 7 | 3110682 | OHJAIN STYRNING GUIDANCE STEUERUNG | E/PWR 125/119X13 | | 3 | | | 0.11 |
| 8 | 3110733 | OHJAIN STYRNING GUIDANCE STEUERUNG | I/PWR 70/76X13 | | 4 | | | 0.07 |
| 9 | 3110197 | TIIVISTE TÄTNING SEAL DICHTUNG | PO-55-150-0700 | | 1 | | | 0.07 |
| 10 | 3010240 | RUUVI SKRUV SCREW SCHRAUBE | KK-PID.RUUVI M10X16 8.8 ZN DIN 915 | | 2 | | | 0 |
| 11 | 28579201 | MÄNTÄ KOLV PISTON KOLBEN | 125 (OK) | L=83 | 1 | | | 4.88 |
| 12 | 28579202 | OHJAIN STYRNING GUIDANCE STEUERUNG | 125/70 | L=98 | 1 | | | 5.56 |
| 13 | 28580101 | SYLINTERIPUTKI CYLINDERROHR | 125/70 X 1020 | | 1 | | | 7.16 |
| 14 | 28580204 | MÄNNÄNVARSI KOLVSTANG PISTON ROD KOLBENSTANGE | 125/70 X 1020 | | 1 | | | 7.18 |
| 15 | 3100185 | LAAKERI LAGER BEARING LAGER | WB 802 7060 | | 4 | | | 0.27 |
| 16 | 3050003 | RASVANIPPA SMÖRJNIPPEL GREASE NIPPLE SCHMIERNIPPEL | M8X1.25 DIN 71412 | | 4 | | | 0 |
| 17 | 3010175 | RUUVI SKRUV SCREW SCHRAUBE | KK M8 X 10 ZN DIN 914 | | 1 | | | 0 |
| 1-9 | 3110734 | TIIVISTE TÄTNING SEAL DICHTUNG | SARJA (125/70 2010/2010T) | | 1 | | sfj | |



28812001

SYLINTERI

50/30 - 2x600

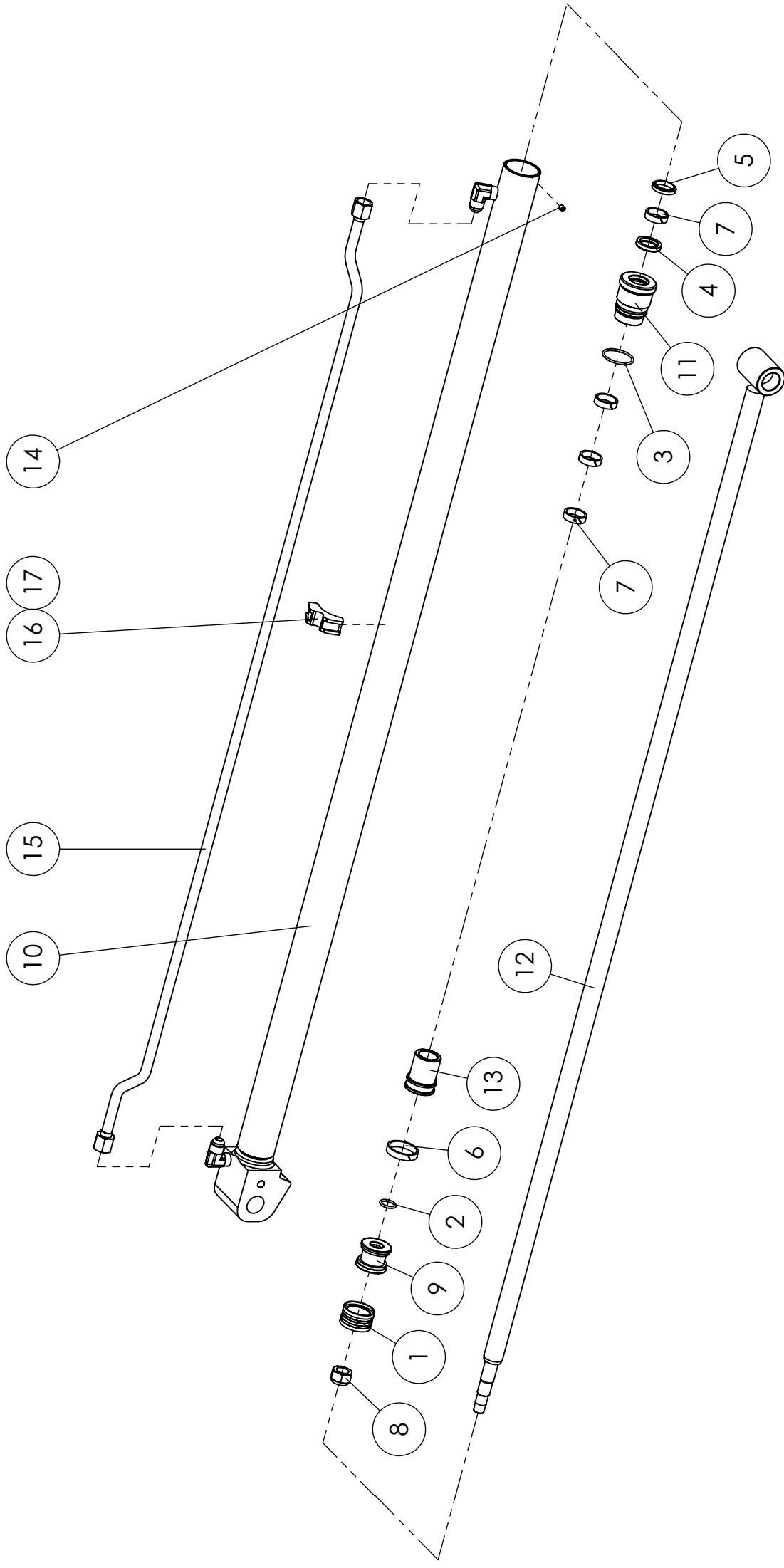
VARAOSAT \ RESERVDELAR \ SPARE PARTS \ ERSATZTEIL



SPARE PART LIST

| | | | |
|---------------|-----------------|----------|------------|
| Item code | 28812001 | Revision | - |
| Title | SYLINTERI | Date | 06.06.2007 |
| Specification | 50/30 X 2 X 600 | | |

| Pos | Item code | Title | Specification | Dimensions | Pc | Amount | Unit | Nto Weight |
|-----|-----------|--|--------------------|------------|----|--------|------|------------|
| 1 | 3110013 | TIIVISTE TÄTINING SEAL DICHTUNG | DA5 50/34 X 18 | | 2 | | | 0.18 |
| 2 | 3110003 | TIIVISTE TÄTINING SEAL DICHTUNG | O 26.2 X 3 70 SH | | 2 | | | 0.01 |
| 3 | 3110288 | TIIVISTE TÄTINING SEAL DICHTUNG | O 39.2 X 5.7 90 SH | | 2 | | | 0.03 |
| 4 | 3110030 | TIIVISTE TÄTINING SEAL DICHTUNG | NI300 30/40X7 | | 2 | | | 0.02 |
| 5 | 3110313 | TIIVISTE TÄTINING SEAL DICHTUNG | GA 30/40 X 7/10 | | 2 | | | 0.03 |
| 6 | 3020026 | MUTTERI MUTTER NUT MUTTER | KM M24 ZN DIN 985 | | 2 | | | 0 |
| 7 | 28337201 | MÄNTÄ KOLV PISTON KOLBEN | D=50 DBM | | 2 | | | 0.26 |
| 8 | 28812101 | SYLINTERIPUTKI CYLINDER RÖR CYLINDER BARREL ZYLINDERROHR | | | 1 | | | 3.76 |
| 9 | 28337202 | OHJAIN STYRNING GUIDANCE STEUERUNG | 50/30 | | 2 | | | 0.9 |
| 10 | 28812204 | MÄNNÄNVARSI KOLVSTÄNG PISTON ROD KOLBENSTANGE | 50/30X2X600 | | 2 | | | 0.65 |
| 11 | 28357106 | KURISTIN STRYP RESTRICTION DROSSEL | R3/8" | L=57 | 1 | | | 0.12 |
| 12 | 3110040 | TIIVISTE TÄTINING SEAL DICHTUNG | USIT R-06 (R 3/8") | | 2 | | | 0 |
| 13 | 3090296 | LIITIN KOPPLINGSSTYCKE CONNECTOR KONNEKTOR | 04000-06 EP | | 1 | | | 0.07 |
| 1-5 | 3110324 | TIIVISTE TÄTINING SEAL DICHTUNG | SARJA 50/30 | | 1 | | sfj | |



28586001 SYLINTERI

VARAOSAT \ RESERVDELAR \ SPARE PARTS \ ERSATZTEIL

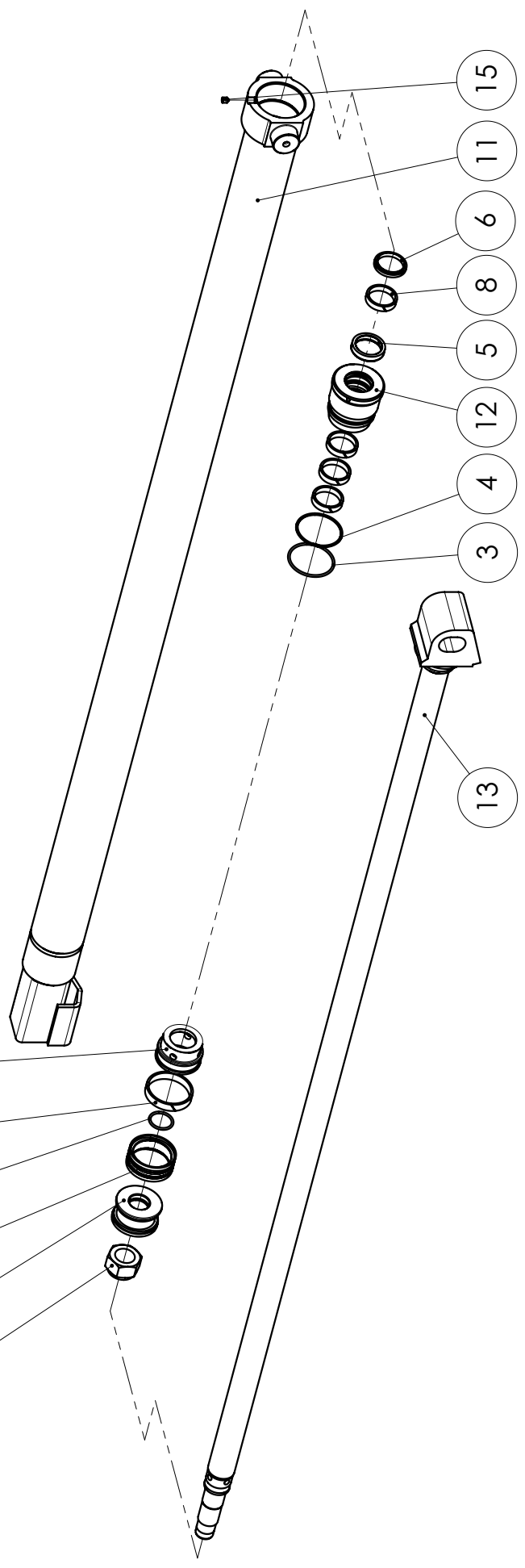
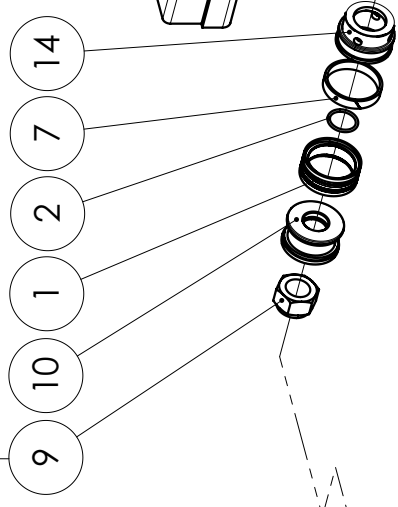


SPARE PART LIST

| | | | |
|---------------|------------|----------|------------|
| Item code | 28586001 | Revision | - |
| Title | SYLINTERI | Date | 30.10.2007 |
| Specification | 50/30X1600 | | |

| Pos | Item code | Title | Specification | Dimensions | Pc | Amount | Unit | Nto Weight |
|-----|-----------|---|-----------------------|------------|----|--------|------|------------|
| 1 | 3110231 | TIIVISTE TÄTNING SEAL DICHTUNG | TPS 50/38 X 20 | | 1 | | | 0.14 |
| 2 | 3110261 | TIIVISTE TÄTNING SEAL DICHTUNG | O 21.2 X 3 90SH | | 1 | | | 0 |
| 3 | 3110669 | TIIVISTE TÄTNING SEAL DICHTUNG | O 45 X 3 90SH | | 1 | | | 0.01 |
| 4 | 3110030 | TIIVISTE TÄTNING SEAL DICHTUNG | NI300 30/40X7 | | 1 | | | 0.02 |
| 5 | 3110027 | TIIVISTE TÄTNING SEAL DICHTUNG | PW 30 | | 1 | | | 0.02 |
| 6 | 3110677 | OHJAIN STYRNING GUIDANCE STEUERUNG | E/PWR 50/44X10 | | 1 | | | 0.03 |
| 7 | 3110741 | OHJAIN STYRNING GUIDANCE STEUERUNG | I/PWR 30/36X10 | | 4 | | | 0.02 |
| 8 | 3020009 | MUTTERI MUTTER NUT MUTTER | KM M20 ZN DIN 985 | | 1 | | | 0 |
| 9 | 28395201 | MÄNTÄ KOLV PISTON KOLBEN | 50 (PDO) | L=30 | 1 | | | 0.31 |
| 10 | 28586101 | SYLINTERIPUTKI CYLINDER RÖR ZYLINDERROHR | 50/30-1600 | | 1 | | | 3.84 |
| 11 | 28586202 | OHJAIN STYRNING GUIDANCE STEUERUNG | 50/30 | L=72 | 1 | | | 0.61 |
| 12 | 28586204 | MÄNNÄNVARSI KOLVSTANG PISTON ROD KOLBENSTANGE | 50/30X1600 | | 1 | | | 0.68 |
| 13 | 28586105 | HOLKKI HYLSA SLEEVE ACHSHALTER | ISKURAJOITINHOLKKI | L=62 | 1 | | | 0.37 |
| 14 | 3010175 | RUUVI SKRUV SCREW SCHRAUBE | KK M8 X 10 ZN DIN 914 | | 1 | | | 0 |
| 15 | 28586401 | PUTKI RÖR PIPE ROHR | | | 1 | | | 0.44 |
| 16 | 3090928 | KIINNIKE FÄSTE FASTENER BEFESTIGUNG | 30-ZR-518 | | 1 | | | |
| 17 | 3090929 | LIITIN KOPPLINGSSTYCKE CONNECTOR KONNEKTOR | ABA-085 | | 1 | | | |
| 1-7 | 3110756 | TIIVISTE TÄTNING SEAL DICHTUNG | SARJA 50/30 | | 1 | | sfj | |

LOCTITE 242



28581001 SYLINTERI

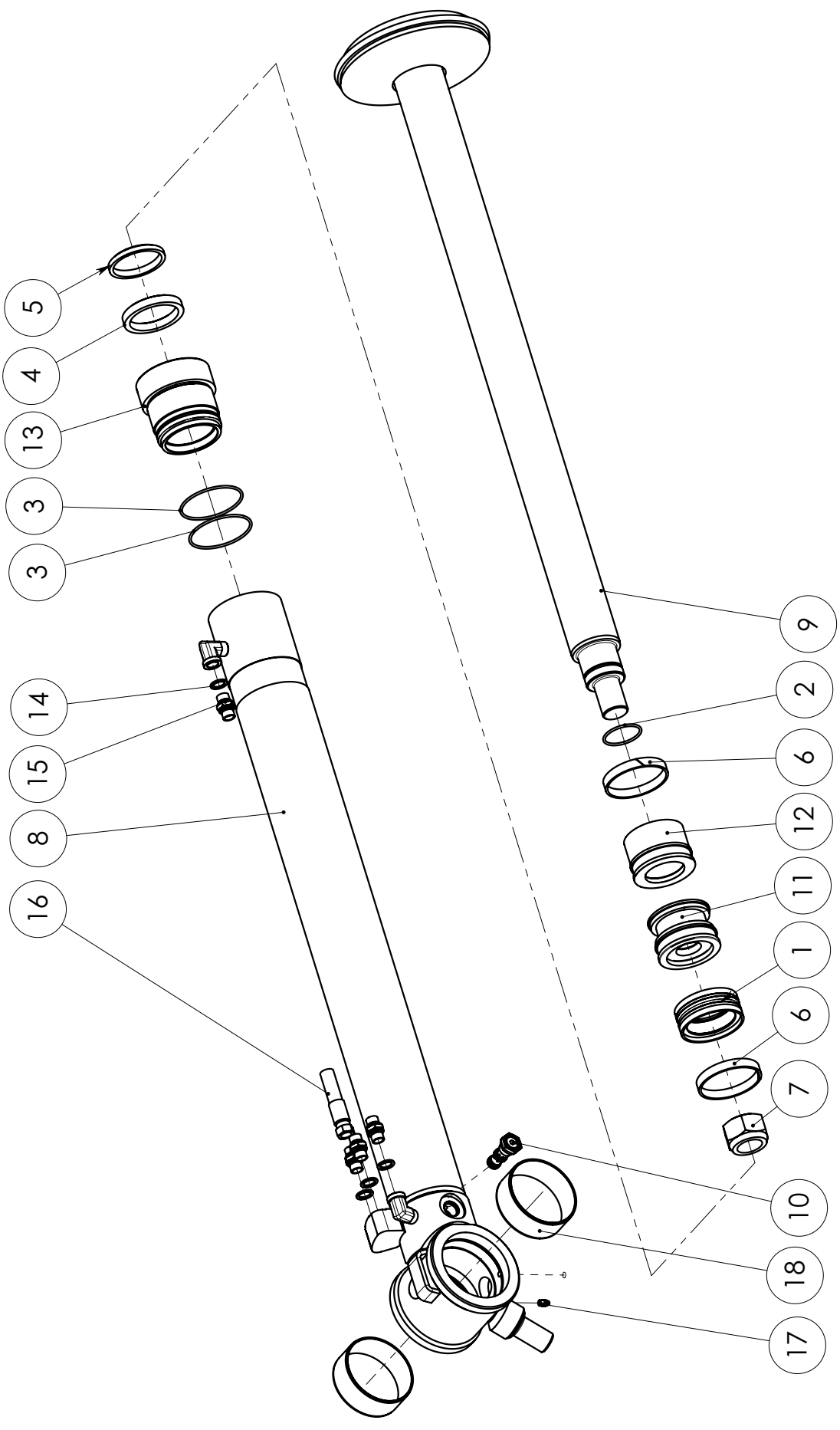
VARAOSAT \ RESERVDELAR \ SPARE PARTS \ ERSATZTEIL



SPARE PART LIST

| | | | |
|---------------|------------|----------|------------|
| Item code | 28581001 | Revision | - |
| Title | SYLINTERI | Date | 15.06.2007 |
| Specification | 70/40-1600 | | |

| Pos | Item code | Title | Specification | Dimensions | Pc | Amount | Unit | Nto Weight |
|-----|-----------|---|-----------------------|------------|----|--------|------|------------|
| 1 | 3110317 | TIIVISTE TÄTNING SEAL DICHTUNG | PDO 70/58 X 20 | | 1 | | | 0.21 |
| 2 | 3110248 | TIIVISTE TÄTNING SEAL DICHTUNG | O 31.5 X 3 90 SH | | 1 | | | 0.01 |
| 3 | 3110009 | TIIVISTE TÄTNING SEAL DICHTUNG | O 64.5 X 3 90 SH | | 1 | | | 0.01 |
| 4 | 3110557 | TIIVISTE TÄTNING SEAL DICHTUNG | TR 70/65X1.3 PU | | 1 | | | 0 |
| 5 | 3110010 | TIIVISTE TÄTNING SEAL DICHTUNG | NI300 40/50X10 | | 1 | | | 0.05 |
| 6 | 3110011 | TIIVISTE TÄTNING SEAL DICHTUNG | PW 40 | | 1 | | | 0.03 |
| 7 | 3110697 | OHJAIN STYRNING GUIDANCE STEUERUNG | E/PWR 70/64X13 | | 1 | | | 0.06 |
| 8 | 3110735 | OHJAIN STYRNING GUIDANCE STEUERUNG | I/PWR 40/46X10 | | 4 | | | 0.03 |
| 9 | 3020145 | MUTTERI MUTTER NUT MUTTER | KM 30X2 ZN DIN 980 V | | 1 | | | 0 |
| 10 | 28349201 | MÄNTÄ KOLV PISTON KOLBEN | D=70 (PDO-TIIV.) | L=30 | 1 | | | 0.64 |
| 11 | 28581101 | SYLINTERIPUTKI CYLINDERBÄRER CYLINDER BARREL ZYLINDERROHR | 70/40 X 1600 | | 1 | | | 5.18 |
| 12 | 28581202 | OHJAIN STYRNING GUIDANCE STEUERUNG | 70/40 | L=72 | 1 | | | 1.39 |
| 13 | 28581204 | MÄNNÄNVARSI KOLVSTÄNG PISTON ROD KOLBENSTANGE | D=40 | | 1 | | | 17.72 |
| 14 | 28581105 | HOLKKI HYLSA SLEEVE ACHSHALTER | ISKURAJOITIN | L=44 | 1 | | | 0.52 |
| 15 | 3010175 | RUUVI SKRUVV SCREW SCHRAUBE | KK M8 X 10 ZN DIN 914 | | 1 | | | 0 |
| 1-8 | 3110736 | TIIVISTE TÄTNING SEAL DICHTUNG | SARJA 70/40 | | 1 | | sj | |



28554001 SYLINTERI



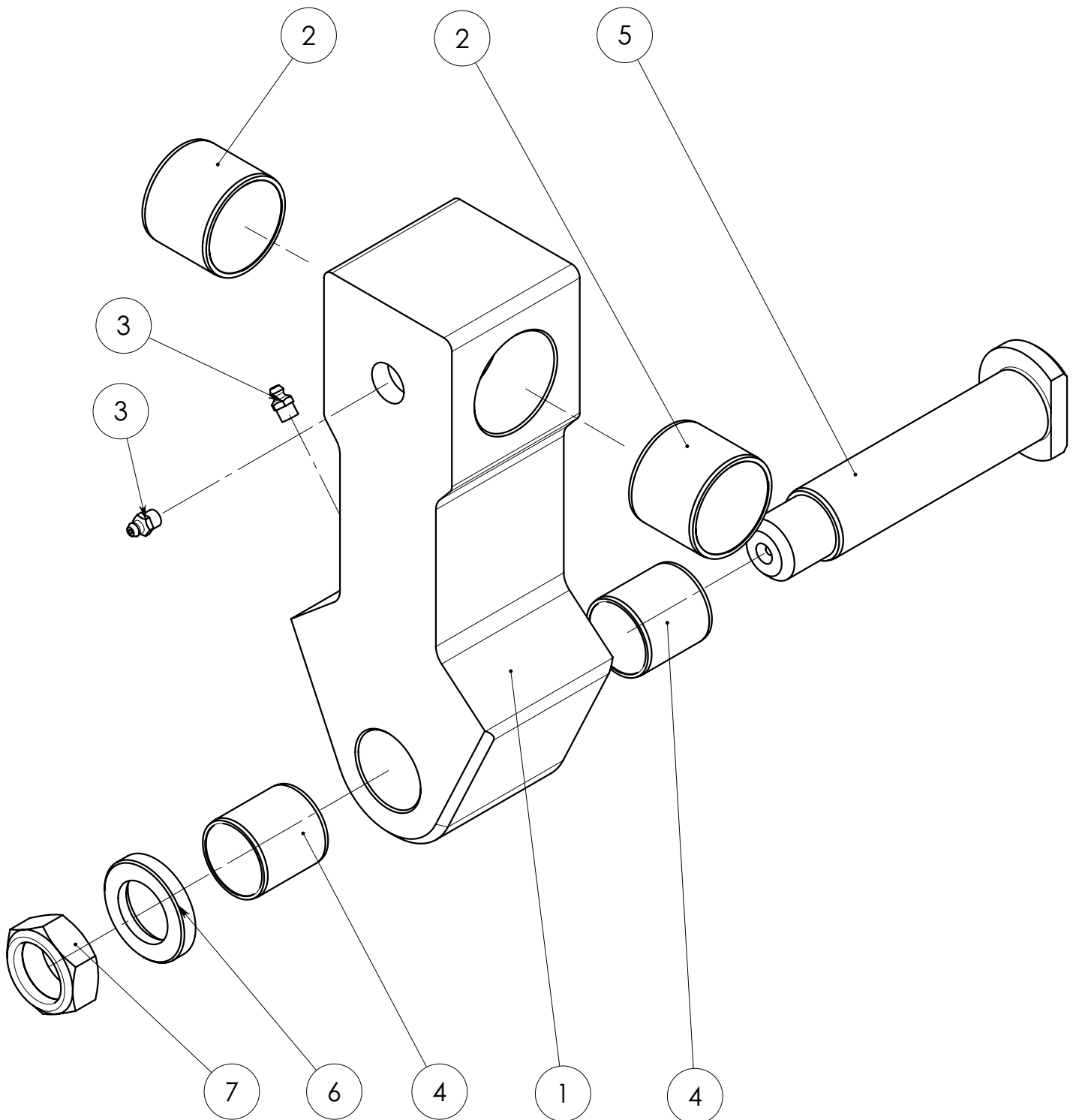
OSALUETTELO

| | | | |
|---------------|---------------|---------|----------------|
| Nimikenumero | 28554001 | Revisio | - |
| Nimitys | SYLINTERI | Päiväys | 28.03.2007 |
| Specifikaatio | TUKIJALKA KOK | Liitty | KESLA NOSTURIT |

| Pos | Nimike n:o | Nimitys + Specifikaatio | Mitat | Kpl | Määrä | Yks | Nto paino | Huom |
|-----|------------|-------------------------------------|-------|-----|-------|-----|-----------|------|
| 1 | 3110025 | TIIVISTE DAS 90/70 X 22 | | 1 | | | 0.50 | |
| 2 | 3110278 | TIIVISTE O 49.5 X 3.0 90SH | | 1 | | | 0.01 | |
| 3 | 3110017 | TIIVISTE O 84.5 X 3 90 SH | | 2 | | | 0.02 | |
| 4 | 3110184 | TIIVISTE B 70/85X12 | | 1 | | | 0.18 | |
| 5 | 3110196 | TIIVISTE GA 70/80 X 7/10 | | 1 | | | 0.07 | |
| 6 | 3110397 | OHJAIN E/PWR 90/84X13 | | 2 | | | 0.08 | |
| 7 | 3020043 | MUTTERI KM M36 X 3 ZN DIN 985 | | 1 | | | 0.00 | |
| 8 | 90021719 | SYLINTERIPUTKI 90_70 X 600 | | 1 | | | 13.11 | |
| 9 | 28554204 | MÄNNÄNVARSI 90/70-750 | | 1 | | | 5.04 | |
| 10 | 3120843 | VENTTIILI RPC-06/5 | | 1 | | | 0.13 | |
| 11 | 28554201 | MÄNTÄ D=90 DBM | | 1 | | | 1.34 | |
| 12 | 28554105 | HOLKKI ISKURAJOITINHOLKKI | | 1 | | | 0.96 | |
| 13 | 28358202 | OHJAIN 90/70 | | 1 | | | 2.46 | |
| 14 | 3110040 | TIIVISTE USIT R-06 (R 3/8") | | 4 | | | 0.00 | |
| 15 | 3090040 | LIITIN 04000-06 | | 4 | | | 0.06 | |
| 16 | 3131328 | LETKU 5701-06/HI98-06/5701-06/L=850 | | 1 | | | | |
| 17 | 3050003 | RASVANIPPA M8X1,25 DIN 71412 | | 3 | | | 0.00 | |
| 18 | 3100288 | LAAKERI WB802 10040 | | 2 | | | 0.25 | |
| 1-6 | 3110430 | TIIVISTE SARJA 90/70 | | 1 | 1 | sfj | | |

90012142

RIIPUKE



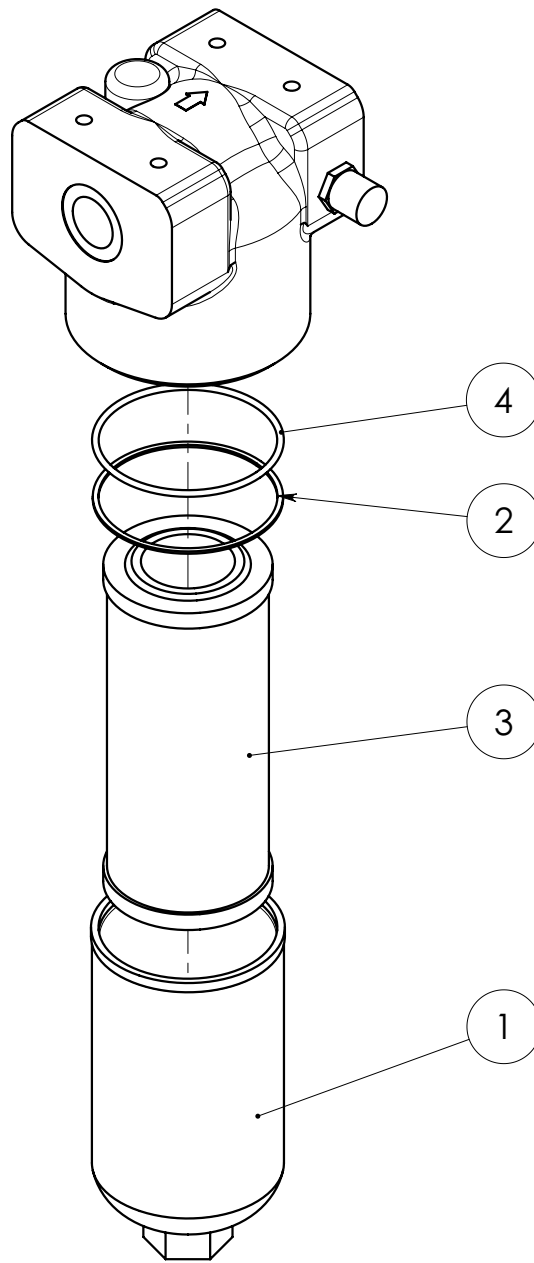
SPARE PART LIST

| | | | |
|---------------|----------|----------|------------|
| Item code | 90012142 | Revision | - |
| Title | RIIPUKE | Date | 12.04.2005 |
| Specification | | | |

| Pos | Item code | Title | Specification | Dimensions | Pc | Amount | Unit | Nto weight |
|-----|-----------|---|----------------------|------------|----|--------|------|------------|
| 1 | 90011322 | RIIPUKE LÄNK LINK GELENK | | L=289 | 1 | | | 11.79 |
| 2 | 3100215 | LAAKERI LAGER BEARING LAGER | WB 802 4540 | | 2 | | | 0.12 |
| 3 | 3050003 | RASVANIPPA SMÖR.JNIPPEL GREASE NIPPLE SCHMIERNIPPEL | M8X1.25 DIN 71412 | | 2 | | | 0 |
| 4 | 3100196 | LAAKERI LAGER BEARING LAGER | WB 802 3540 | | 2 | | | 0.07 |
| 5 | 90013110 | AKSELI AXEL AXLE ACHSE | 35-172 | L=207 | 1 | | | 1.32 |
| 6 | 90013659 | ALUSLEVY BRICKA WASHER UNTERLEGSCHEIBE | 50/31-8 | 65x65 | 1 | | | 0.07 |
| 7 | 3020144 | MUTTERI MUTTER NUT MUTTER | KM6 M30X1.5 ZN NYLOC | | 1 | | | |

3091211

SUODATIN

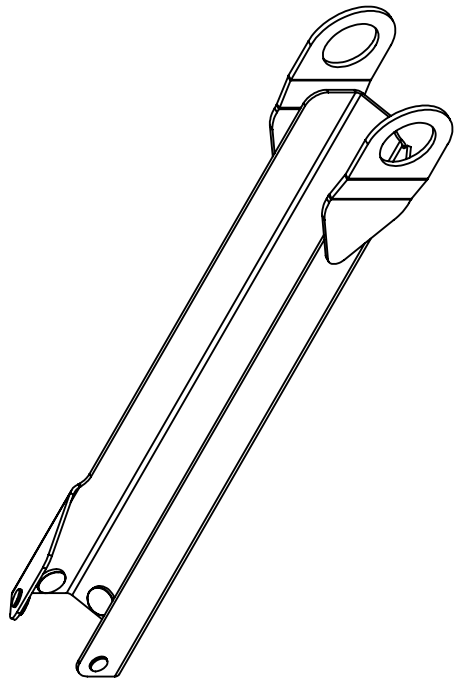
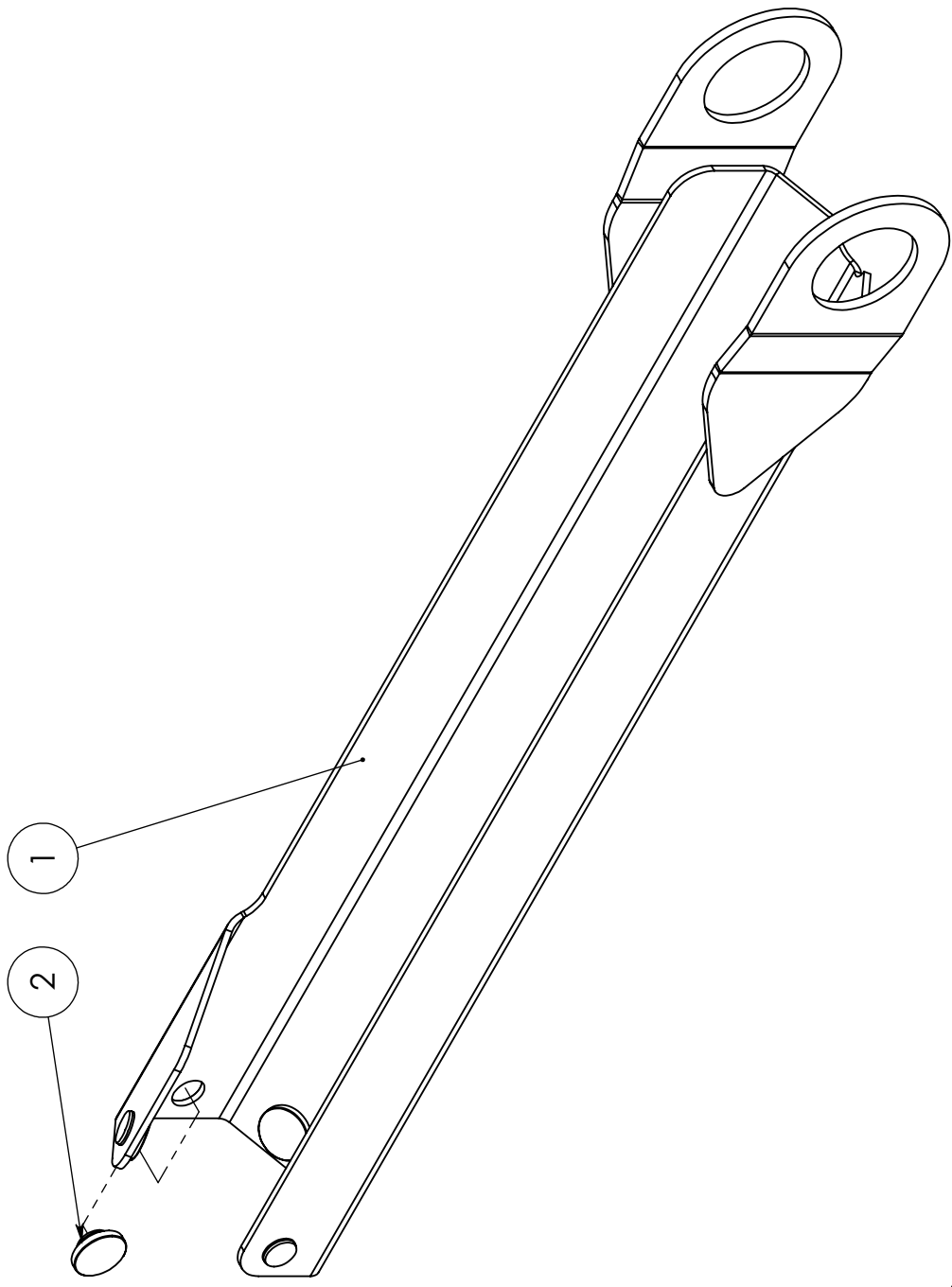




SPARE PART LIST

| | | | |
|---------------|-------------------|----------|------------|
| Item code | 3091211 | Revision | - |
| Title | SUODATIN | Date | 29.05.2008 |
| Specification | 70T220QBPKG161S01 | | |

| Pos | Item code | Title | Specification | Dimensions | Pc | Amount | Unit | Nto weight |
|-----|-----------|--------------------------------|-------------------------|------------|----|--------|------|------------|
| 1 | 3090979 | SUODATIN FILTER FILTER FILTER | FF7006 | | 1 | | | |
| 2 | 3110707 | TIIVISTE TÄTNING SEAL DICHTUNG | TR 95.1X101.1X1.5 PO-01 | | 1 | | | 0 |
| 3 | 3090885 | SUODATIN FILTER FILTER FILTER | FC7006.Q020.BK | | 1 | | | |
| 4 | 3110706 | TIIVISTE TÄTNING SEAL DICHTUNG | O 94.84X3.53 90SH | | 1 | | | 0.02 |



90022767 SUOJA



SPARE PART LIST

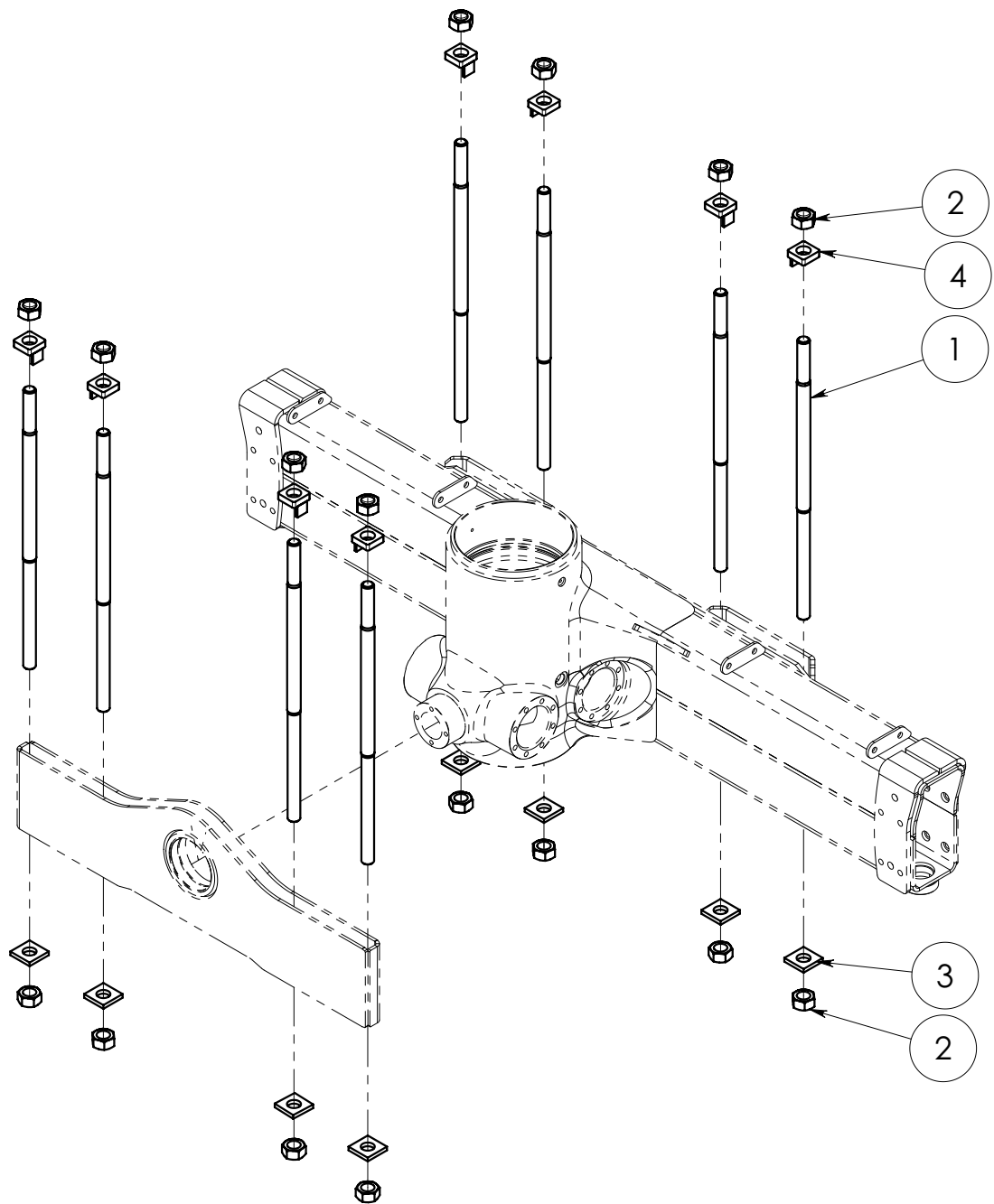
| | | | |
|---------------|-------------|----------|------------|
| Item code | 90022767 | Revision | - |
| Title | COVER | Date | 12.09.2008 |
| Specification | KESLA 2010L | | |

| Pos | Item code | Title | Specification | Dimensions | Pc | Amount | Unit | Nto weight |
|-----|-----------|-----------|---------------|------------|----|--------|------|------------|
| 1 | 90022766 | COVER | NOSTOSYL HITS | | 1 | | | 15.84 |
| 2 | 90013832 | GLIDE PAD | 40-14 | L=16 | 5 | | | 0.01 |

90022522

VARUSTELU

KIINNITYSPULTIT



KIRISTYSMOMENTTI 1200Nm (122 kpm)



SPARE PART LIST

| | | | |
|---------------|----------------|----------|--------------------|
| Item code | 90022522 | Revision | - |
| Title | VARUSTELU | Date | 30.04.2008 |
| Specification | KIINITYSPULTIT | | KESLA 2009L, 2010L |

| Pos | Item code | Title | Specification | Dimensions | Pc | Amount | Unit | Nto weight |
|-----|-----------|--|----------------------|------------|----|--------|------|------------|
| 1 | 90022238 | RUUVI SKRUV SCREW SCHRAUBE | M30X2-750 | L=750 | 8 | | | 3.87 |
| 2 | 3020170 | MUTTERI MUTTER NUT MUTTER | KM 30 X 2 ZN DIN 934 | | 16 | | | 0 |
| 3 | 90014010 | ALUSLEVY BRICKA WASHER UNTERLEGSCHEIBE | 60X60/31-10 | L=60 | 8 | | | 0.22 |
| 4 | 90013054 | ALUSLEVY BRICKA WASHER UNTERLEGSCHEIBE | M30-16 | | 8 | | | 0.28 |
| 1-4 | 90022521 | RUUVI SKRUV SCREW SCHRAUBE | SARJA M30X2-750 | | 1 | | | 24.8 |

